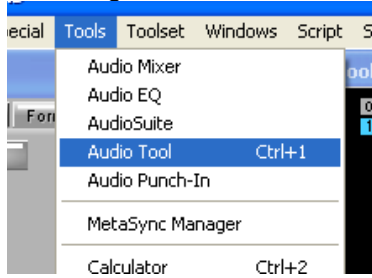


Susanne Kraft
4_20_06

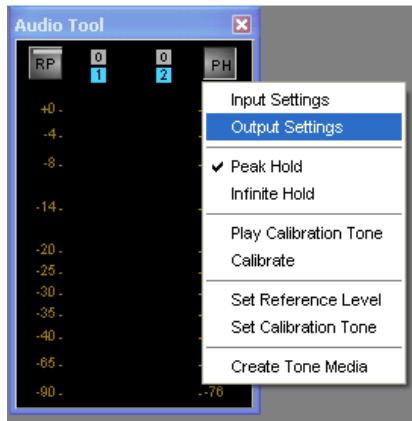
How to set AUDIO OUTPUT SETTINGS in AVID

Audio should be set to MONO for the 318 outputs to DV.

In AVID go to >Tools>Audio Tool



In the Audio Tool click on the PH button and go to Output Settings



Click on the Stereo/Mono button to toggle it to Mono. This will change the audio to Mono for output.

