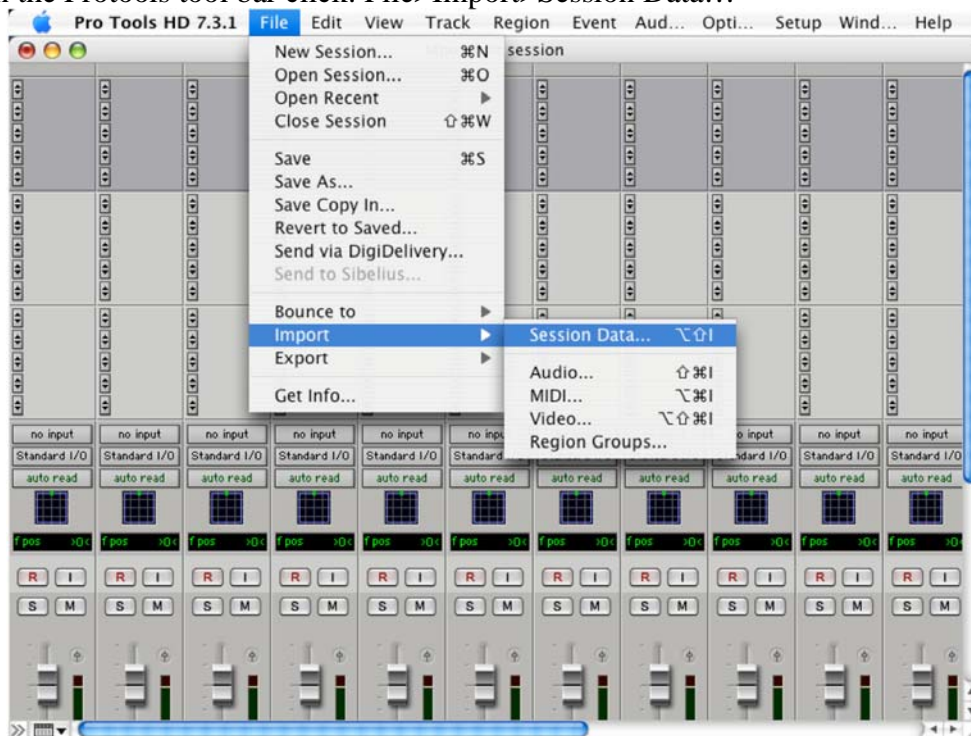
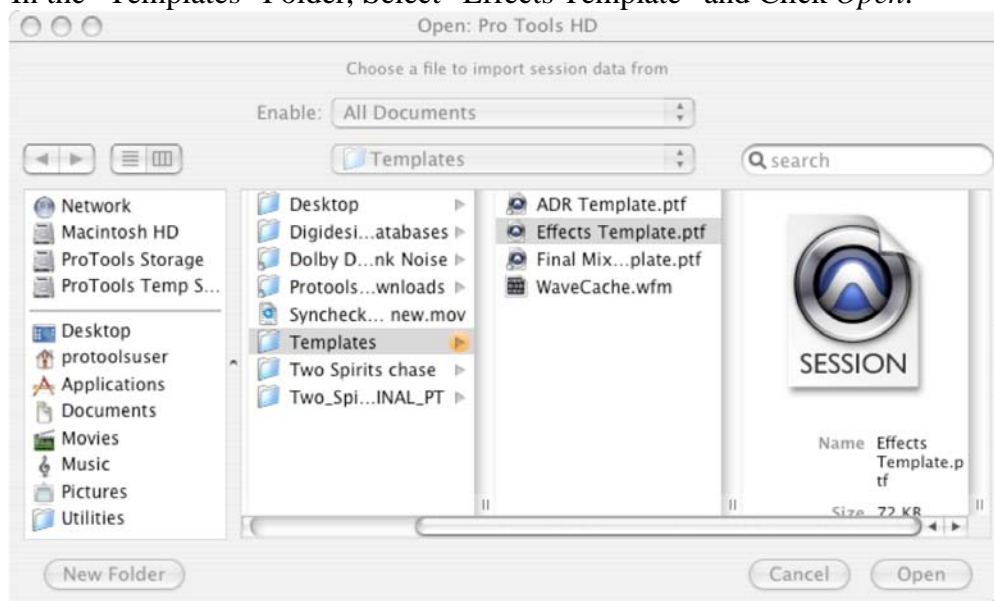


Adding and Using Reverb/Echo and Subwoofer in your mixes.

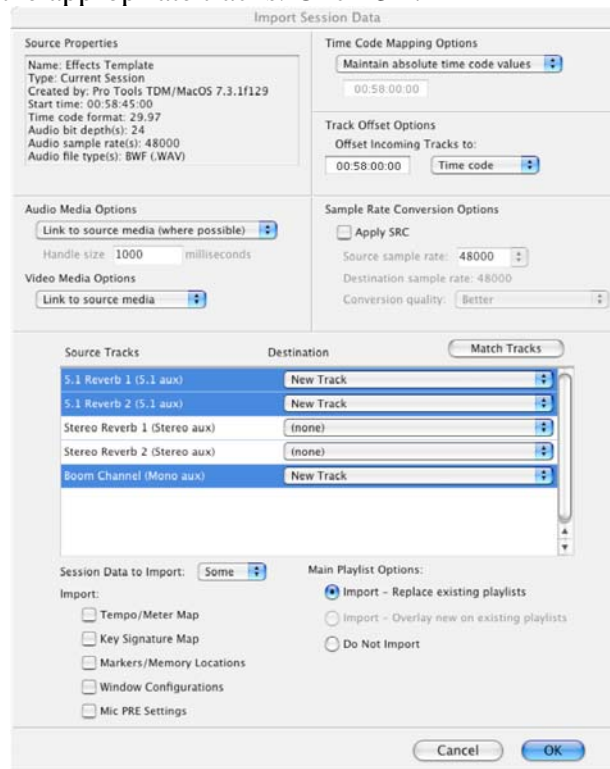
1. This process is exactly the same for both Surround and Stereo Mixes.
2. Open your session following the instructions in: *Opening Your Protocols LE Session in PT_RM5*.
3. In the Protocols tool bar click: File>Import>Session Data...



4. In the “Templates” Folder, Select “Effects Template” and Click *Open*.



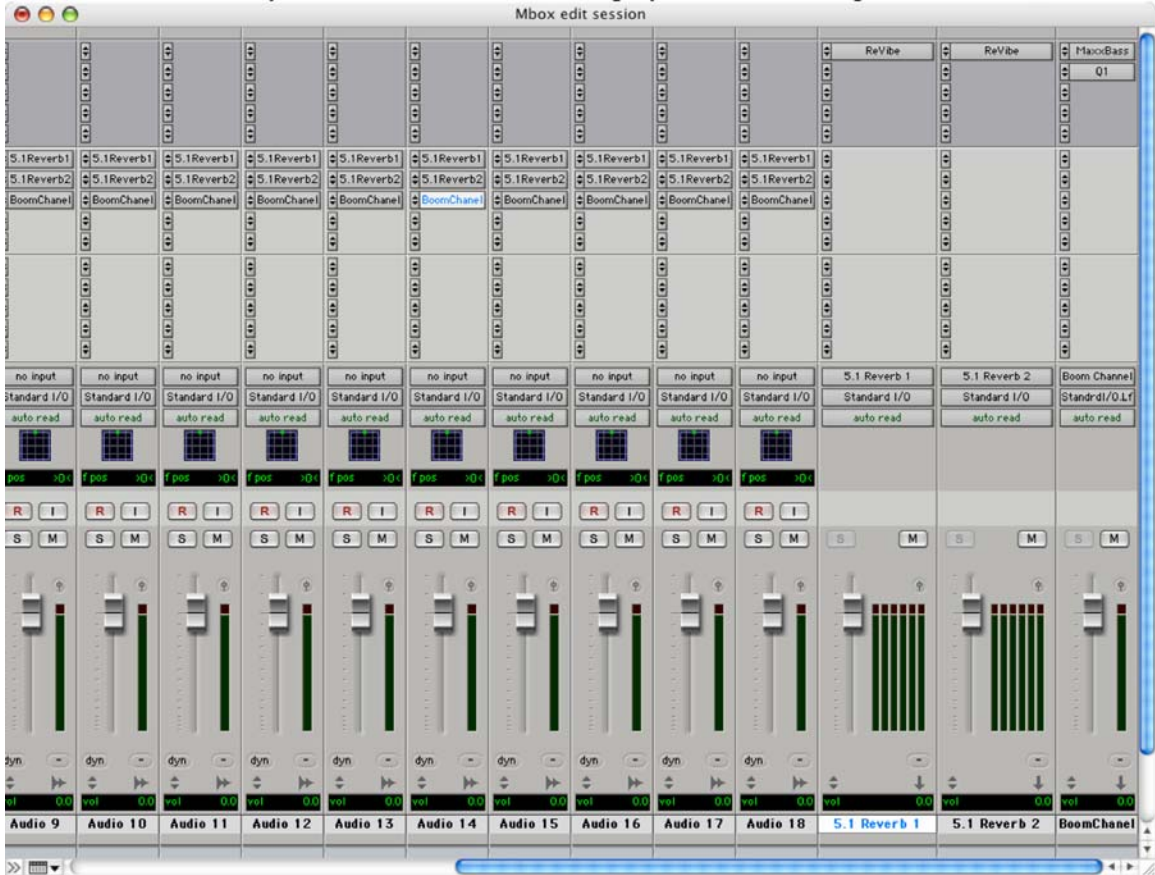
5. Select the Tracks that Correspond to your mix; 5.1 Reverb for a surround mix, Stereo Reverb for a stereo mix. **Import the Boom Channel only to add Subwoofer to a SURROUND MIX.** Subwoofer should not be used for a stereo mix. When you have selected the appropriate tracks. Click **OK**.



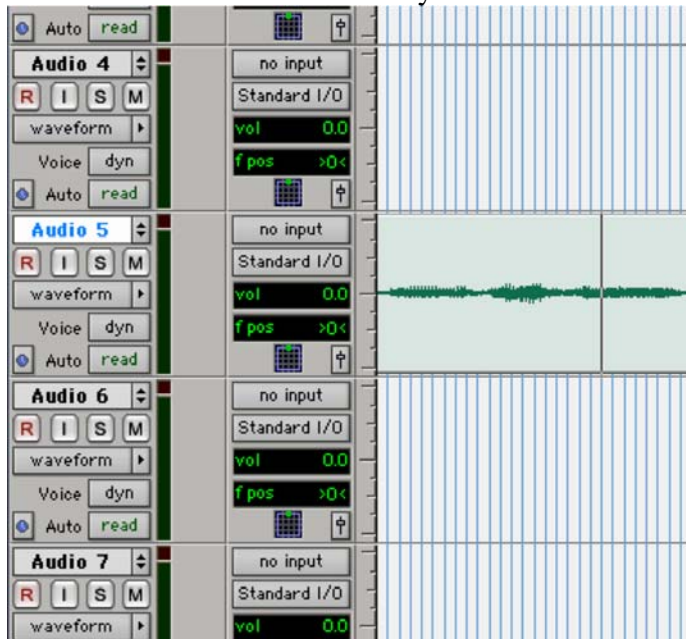
6. Click on the *Sends* arrow (the up down arrows at the top on the Light grey part of the mixer, and select bus, then the **reverb send** or **boom send** that you wish to use on that track. If you want to have the option to use reverb on every track, hold down option before you click.



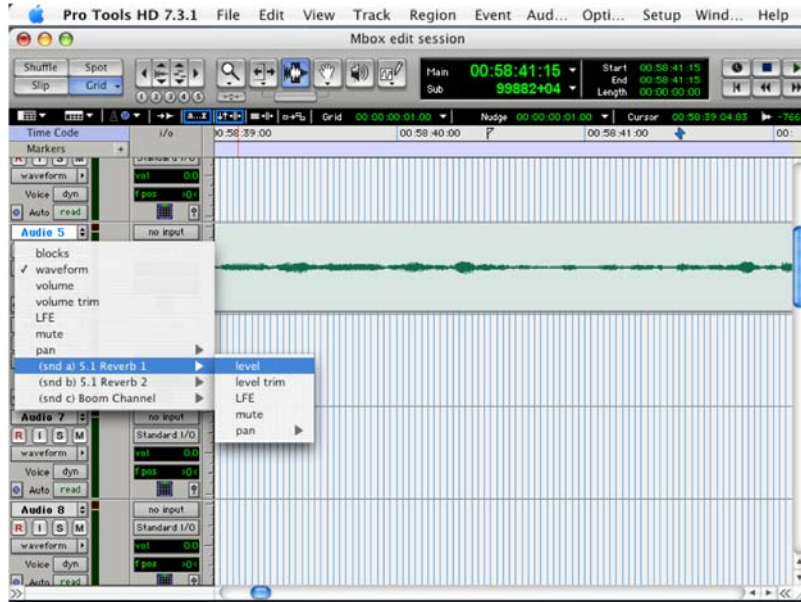
7. Make sure that you do not assign the **Reverb Send/Boom Send** to the Reverb or Boom tracks. When you have finished these steps your session might look like this:



8. To automate your reverbs (so that you can add more or less reverb to a track) Click into the *Edit Window* and click on the track that you wish to add reverb to.



- Click the button that says “Waveform” and Select the reverb/Boom that you want to mix in>level.



- Using the Grabber tool:  Draw in the amount of reverb that you want to send:

