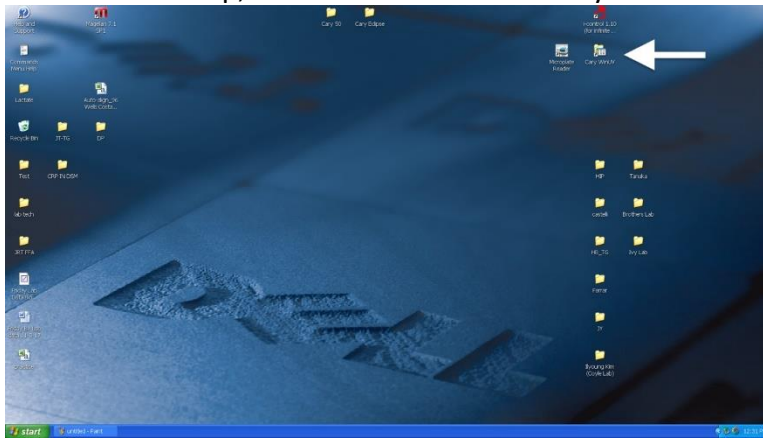


Instructions for Cary Spectrophotometer Use for Single Cuvette

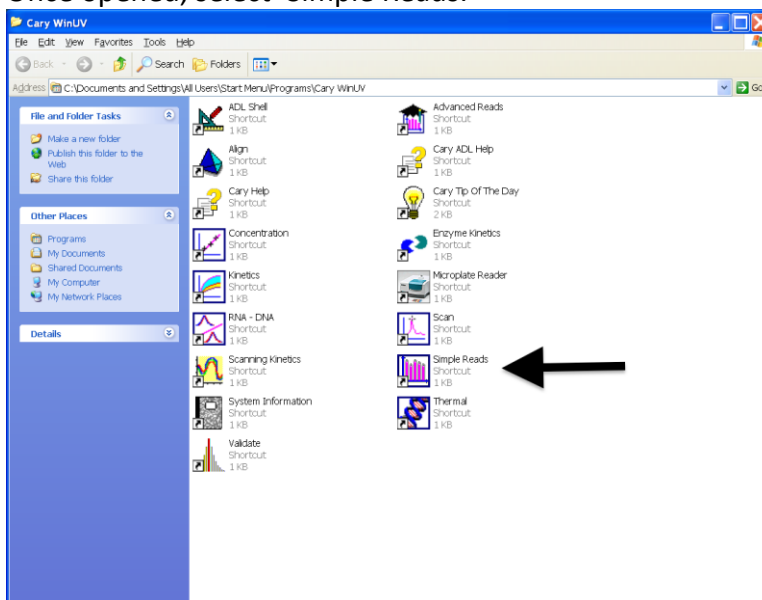
Turn on computer and allow the spectrophotometer to complete calibration before logging into the computer or running any software. You will know the machine is finished calibrating when it is no longer making any noise. There is no password to log into the computer, select 'ok' on the log in screen to gain access.

DO NOT CHANGE HARDWARE SETUP FROM THE SINGLE CUVETTE. If you need to read a microplate use the Tecan spectrophotometer.

1. From the Desktop, select the folder titled Cary WinUV.

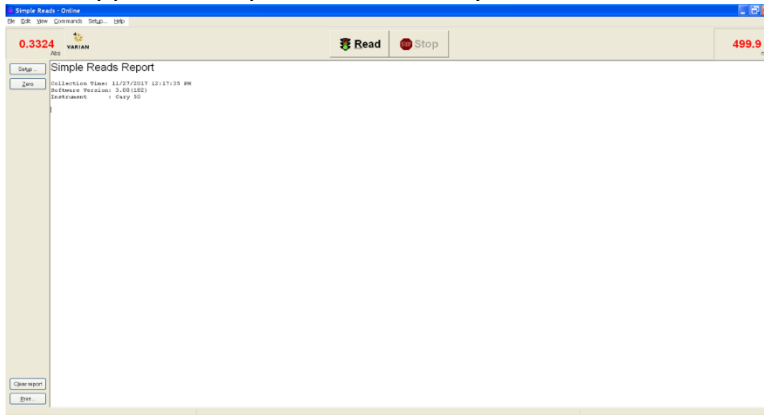


2. Once opened, select 'Simple Reads.'

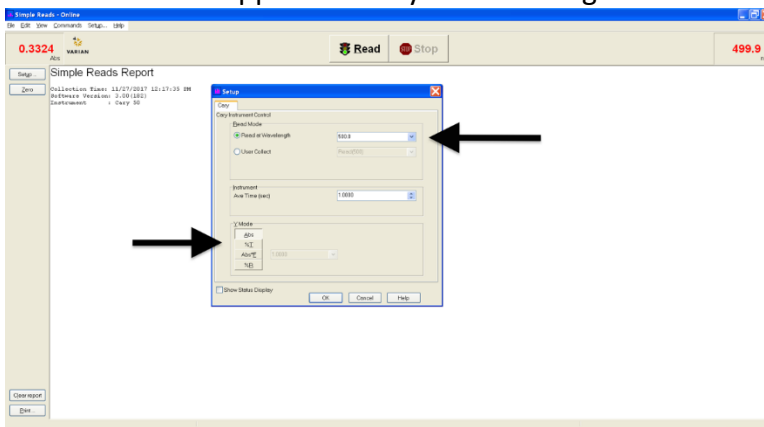


3. A message will pop up, select 'ok', a secondary message will come up, select 'ok' again.

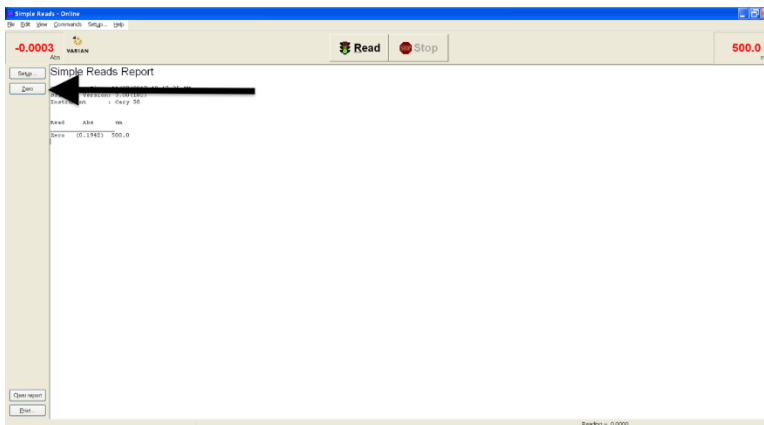
4. Once application opens, this will be your home screen.



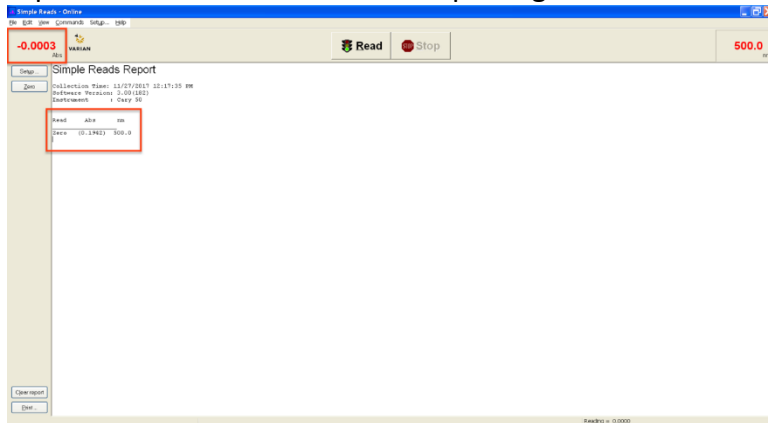
5. Pick the appropriate wavelength using the setup tab at the top of your screen. Once clicked this window will appear. Enter your wavelength and ensure Abs is selected.



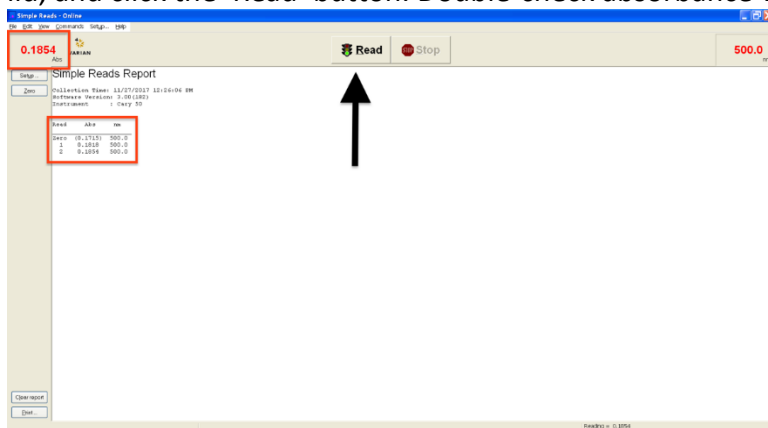
6. After setup, zero the instrument using the reagent provided for your specific protocol. Add the solution to a cuvette and place it inside the cuvette holder. Shut the lid and click the zero button located on the left side of the screen.



- Double-check you have successfully zeroed the instrument by checking the Abs box in the top left of the screen and in the reporting section.



- To read sample absorbances: for each sample, insert cuvette into the cuvette holder, shut lid, and click the 'Read' button. Double-check absorbance values look reasonable.



- Enter sample absorbances directly into the excel file titled 'Glucose Assay_Single Cuvette_Results Template.'
- Close the program and ensure all samples have been removed from the cuvette holder and disposed of properly.