

Image Scanning Workflow – AVID, Final Cut Pro Using Photoshop

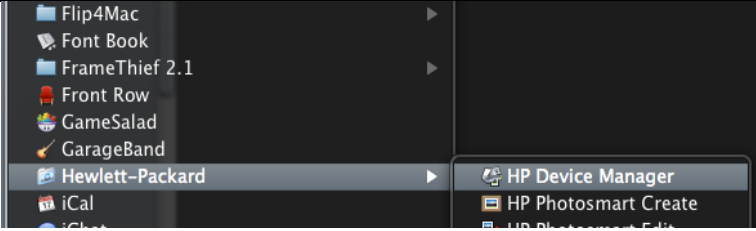
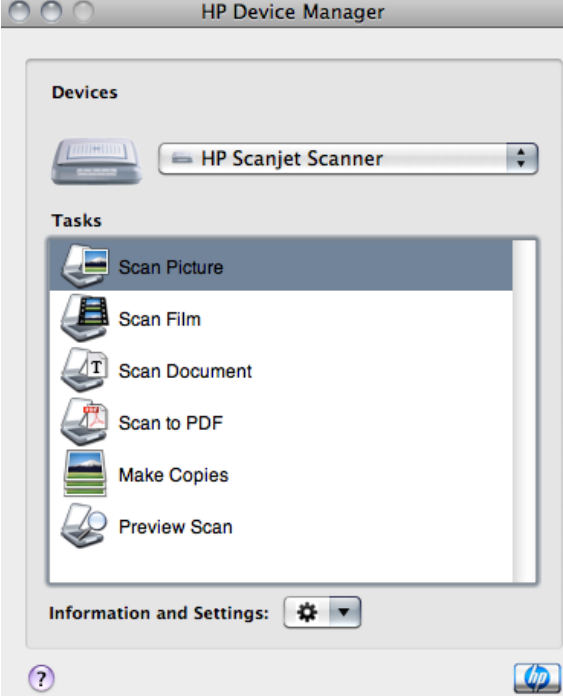
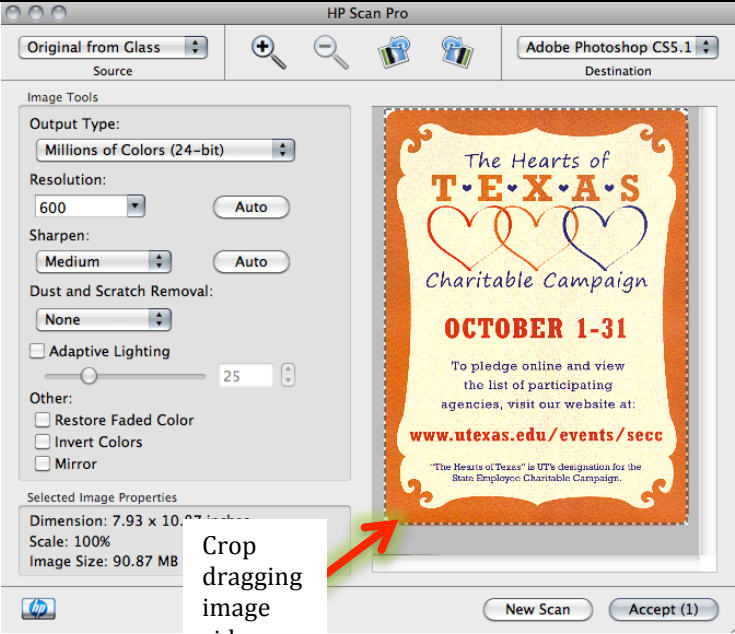
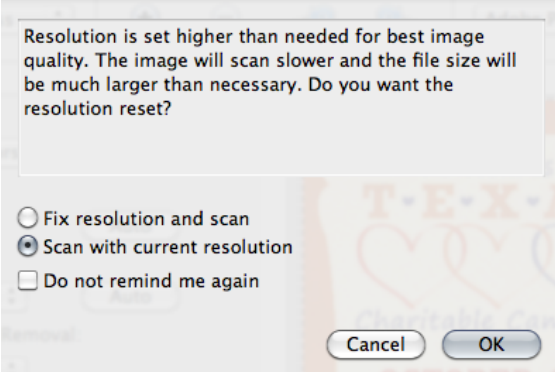
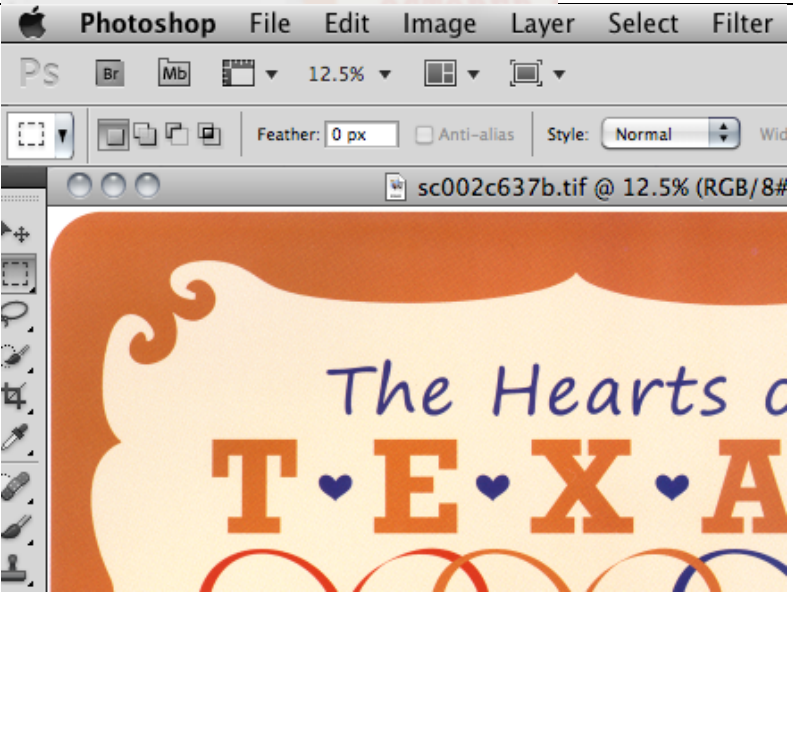
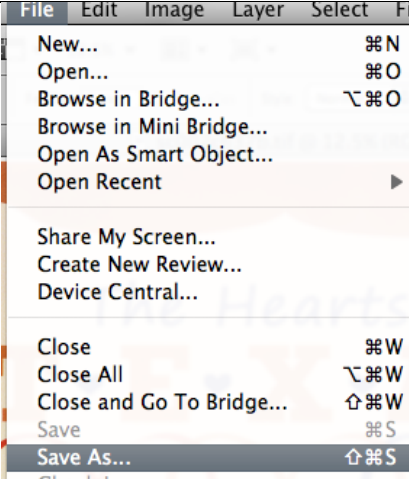
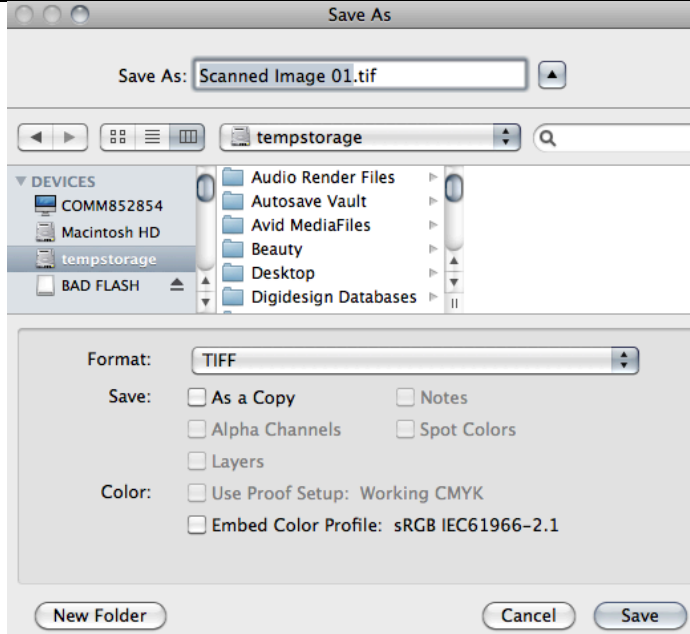
<ol style="list-style-type: none"> 1. Make sure the scanner is attached via USB cable and plugged in 2. Go to Applications>Hewlett Packerd> HP Device Manager 	
<ol style="list-style-type: none"> 3. HP Scanjet Scanner will detect the scanner attached and 4. Select Scan Picture 	
<ol style="list-style-type: none"> 5. Choose the following <ul style="list-style-type: none"> – Output Type Millions of Colors 24 bit • Resolution – 600 DPI • Set the Destination to Adobe Photoshop CS5.1 • Use the cropping tools to adjust the selected image • Sharpen – Medium • Dust and Scratch Removal – None • Leave all other selections at default • Click Accept 	 <p>Crop dragging image sides</p>

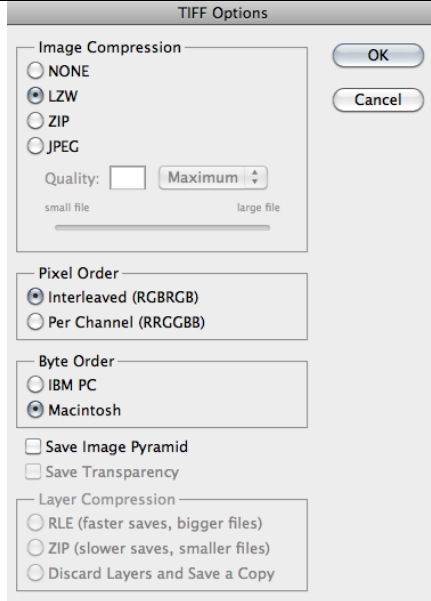
Image Scanning Workflow – AVID, Final Cut Pro Using Photoshop

<p>6. Select Scan with current resolution on this menu and click OK</p>	
<p>7. This might take a few minutes. The pop-up scanner utility window should close and the image should open in Photoshop. At this point, you can use Photoshop's tools to brush out scratches, adjust color ranges and tones, and much much more. Consult the User Guide for Photoshop to learn more about the various tools the package has to offer.</p>	
<p>8. To save the file for AVID or Final Cut Pro Choose File⇒Save As. A new window will pop-up.</p>	

9. Change the name by typing it in the space provided and change the format to TIFF by using the pull down menu. Choose to save As a Copy to flatten the image.



10. The TIFF format (Tagged Image File Format) is a lossless image format which is superior in quality to other more commonly used formats such as JPG, GIF, and PNG. They can get pretty large...so to save them efficiently, select the following when the TIFF Options window pops up and click OK:



***Compression = LZW, Pixel Order = Interleaved, Byte Order = Macintosh**