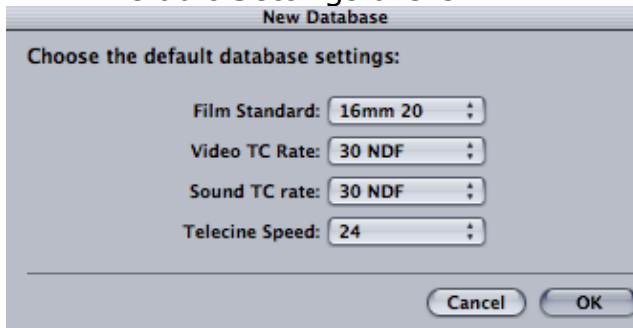
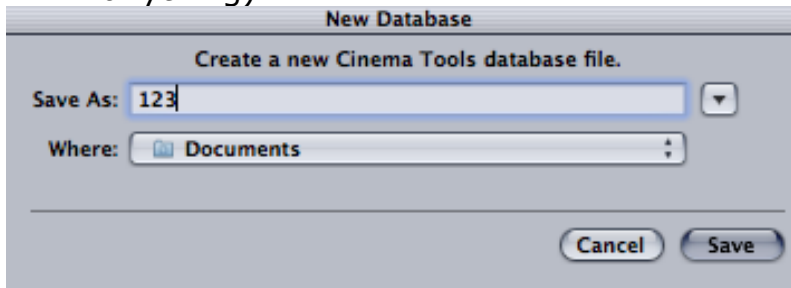


Cinema Tools – 59.94 to 23.98 Slo-Motion Conform

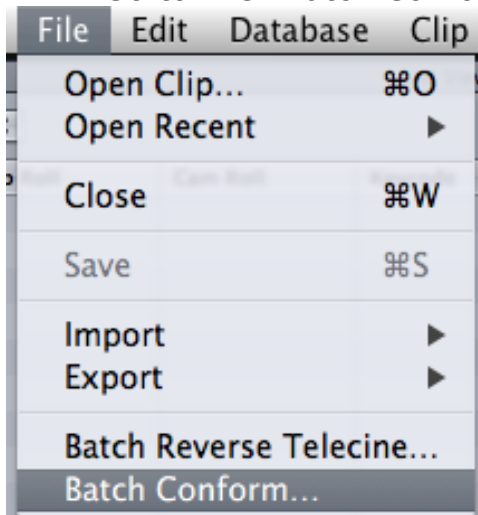
- *NOTE: MAKE COPIES OF ALL THE VIDEO FILES TO BE CONVERTED. CINEMA TOOLS DOES NOT MAKE NEW MEDIA IT SIMPLY CONVERTS THE EXISTING MEDIA TO THE NEW FRAME RATE DURING THE CONFORM. IF YOU DON'T HAVE A BACK UP AND THE MEDIA GETS CORRUPTED THEN YOU WILL LOOSE MEDIA*
- Open Cinema Tools
- Choose to create a "New Database"
- Default Settings are OK



- Save the Database (don't need to reuse this so name it anything)

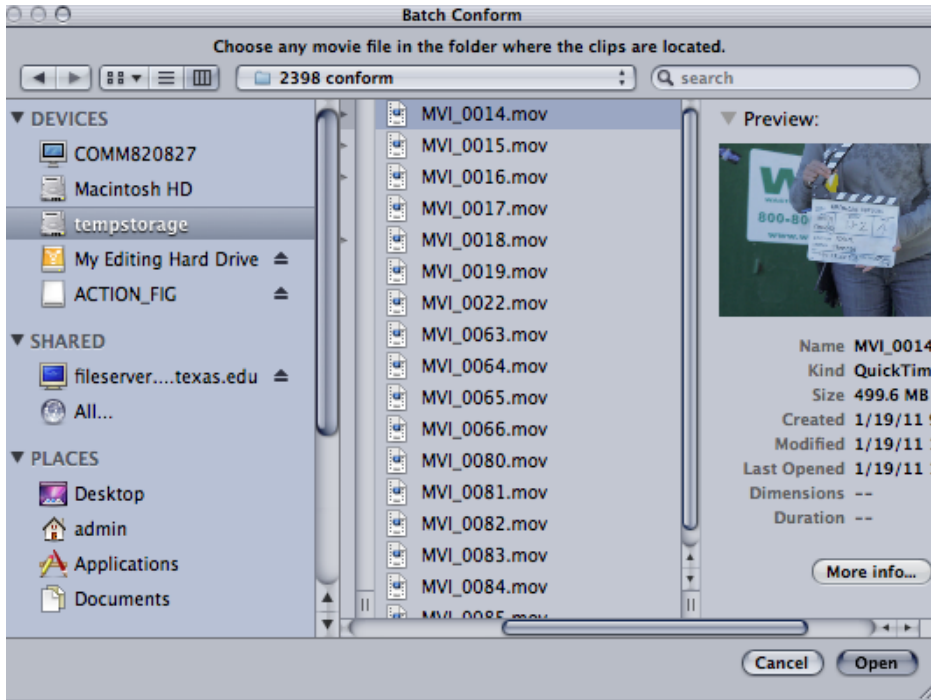


- Go to File>Batch Conform

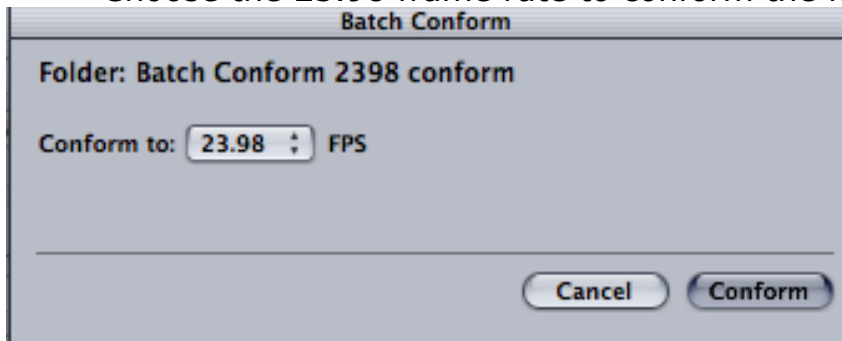


Cinema Tools – 59.94 to 23.98 Slo-Motion Conform

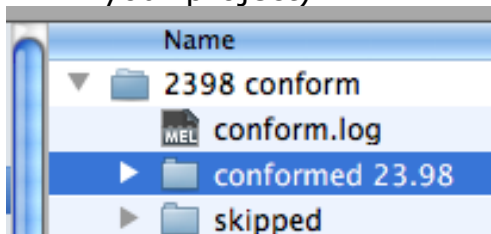
- Navigate to the folder containing the 59.94 ProRes clips that need to be slowed down to 23.98 and select one of the clips in the folder



- Choose the 23.98 frame rate to conform the files



- Then click on "Conform"
- Quit Cinema Tools
- Cinema Tools will make a new folder called "conformed (name of your project)"



- Load the conformed clips back in FCP. Using the >File>Import function. Files will be slo-motion 23.98.