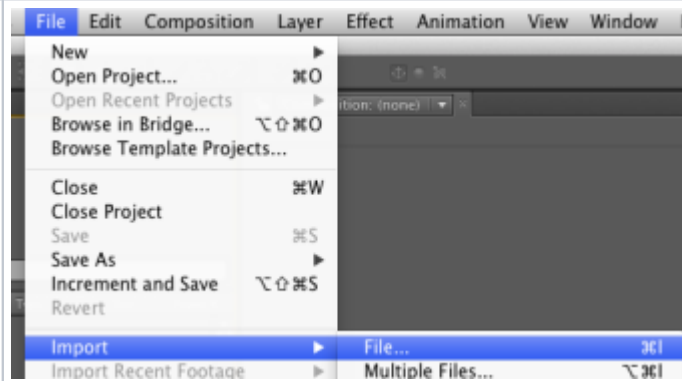


After Effects - Importing Sequential Stills into a Composition

Go To File>Import

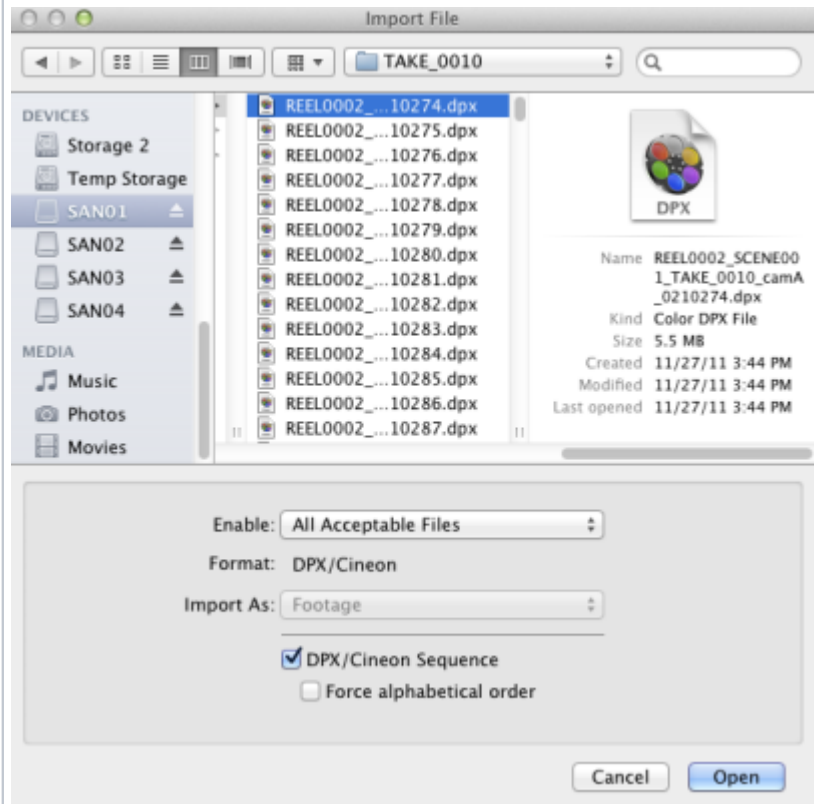
Choose >File (not Multiple Files)



Select the first file in the list that has the lowest number

The Check Box will automatically be checked as After Effects knows that the imported images will be a sequence

Click Open



After all the files import then select the files and drag them down to the new composition icon to make a composition of the imported sequential stills

