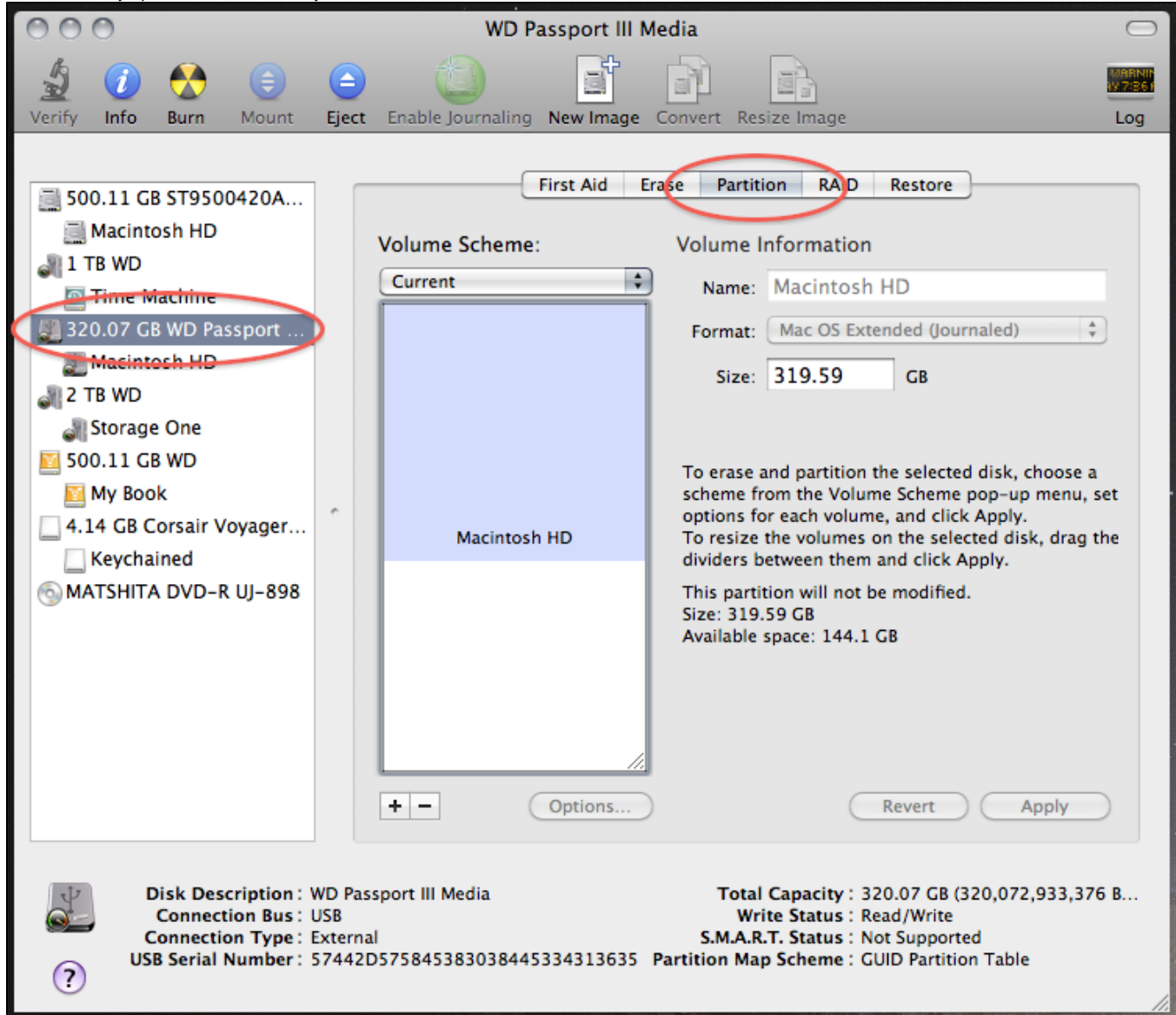


Advanced formatting using Disk Utility

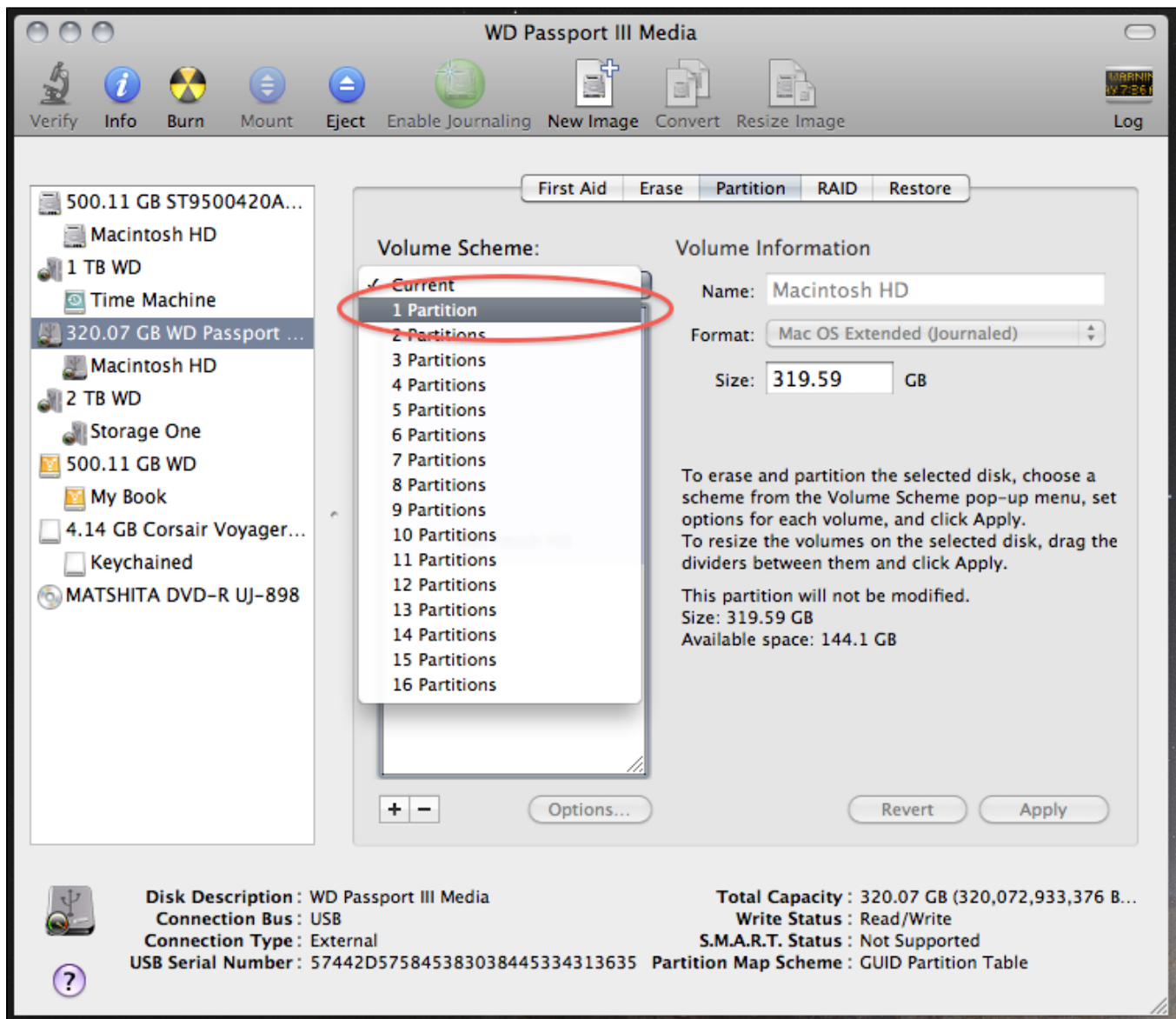
Sometimes you need more than a basic erase and reformat for your disk. This wiki will show you how to perform more advanced operations like repartitioning, securely erasing data, formatting for PC compatibility and more. You should be familiar with the basic formatting process using Disk Utility before attempting these advanced formatting tasks.

Partitioning

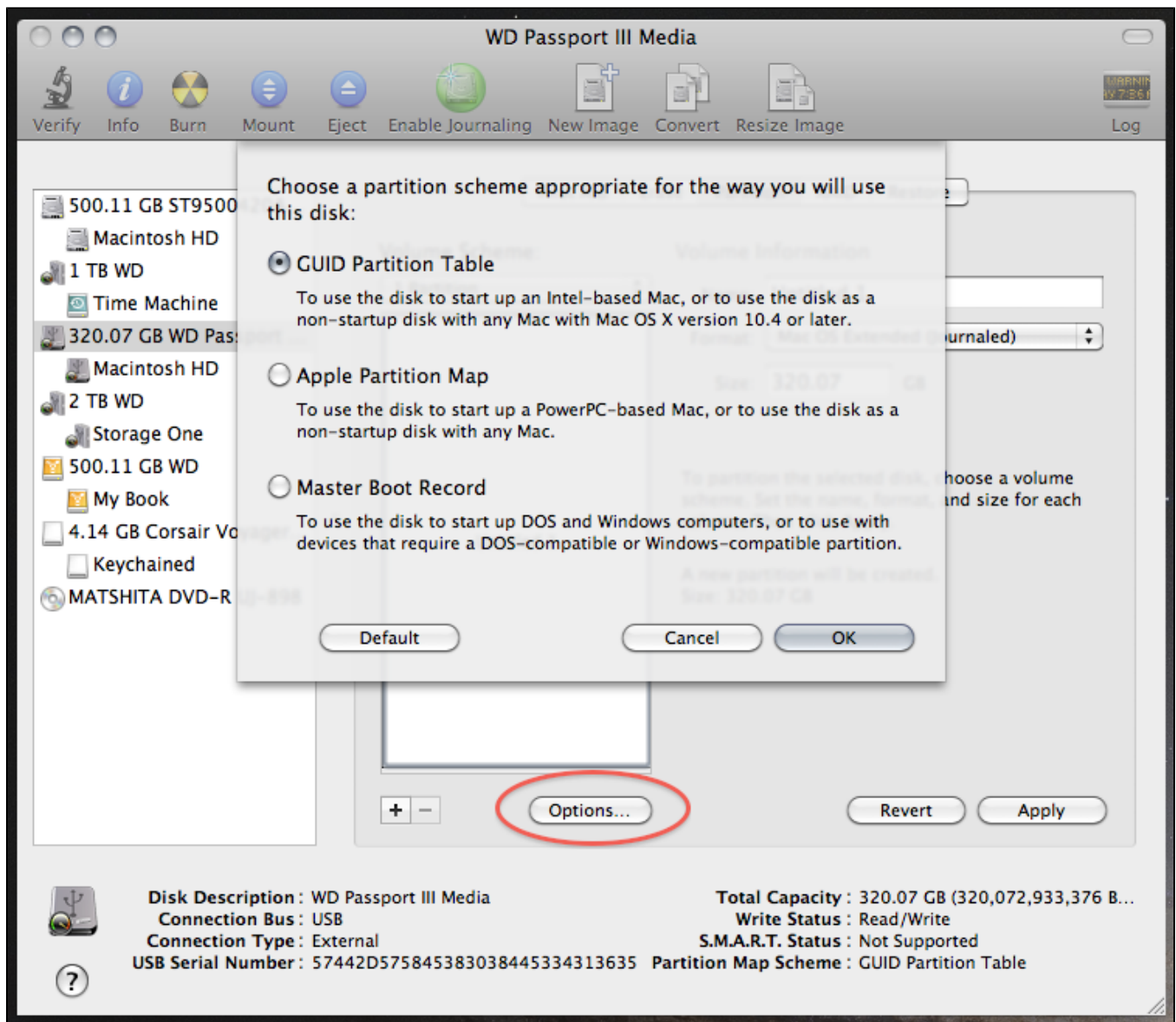
With Disk Utility open, select the device you want to work with then select the Partition tab.



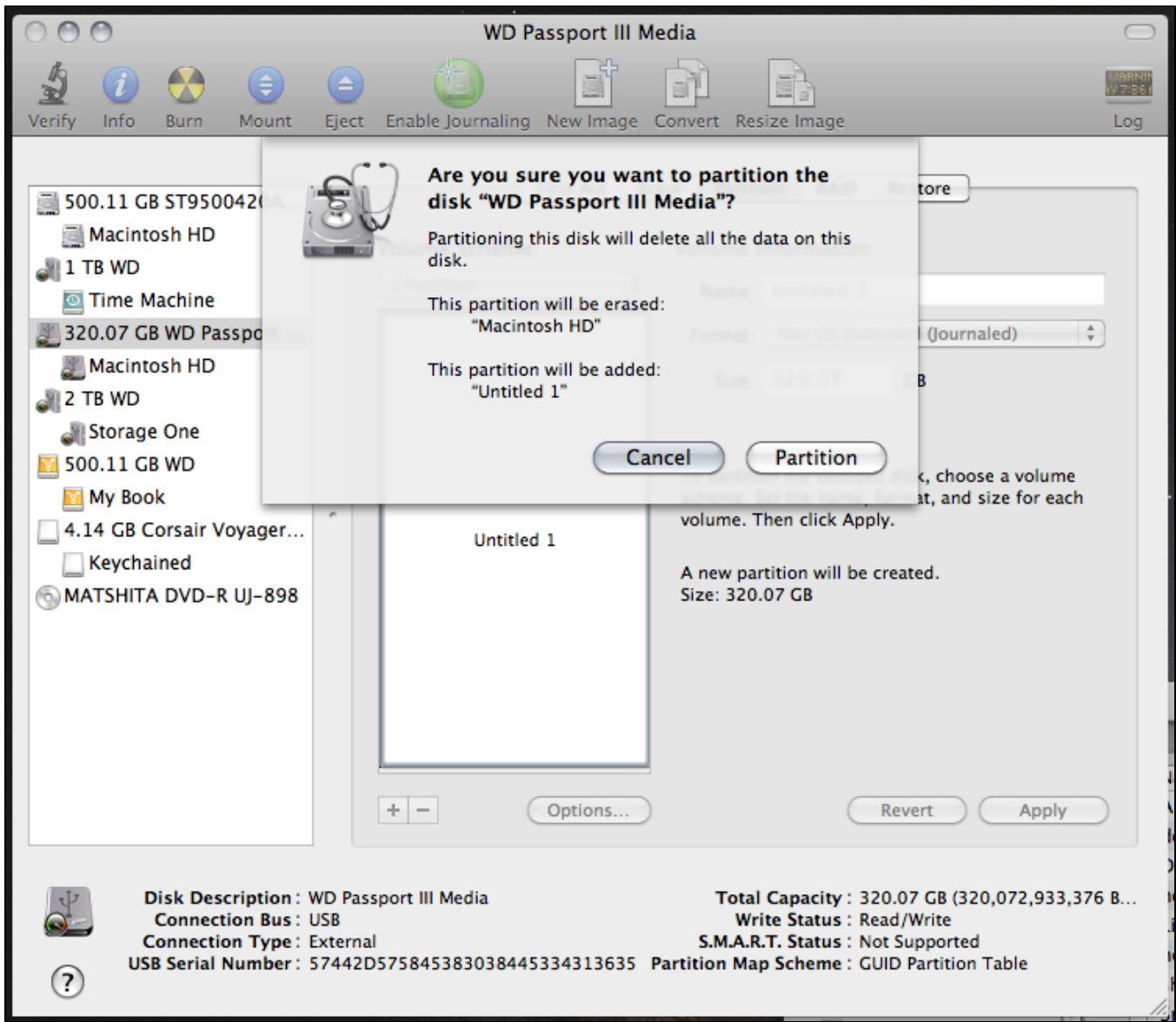
Select how many number of partitions you want by clicking on the Volume Scheme menu.



Click the Options... button to select the Partition Map Scheme you want to use.



After you've made your selections, click the Apply button.



If everything is correct, click Partition and Disk Utility will take care of the rest.

Formatting for PC compatibility

- coming soon

Securely Erasing Data

- coming soon