

# MobaXterm

THIS SERVICE **REQUIRES** USING **VPN** FROM OFF-CAMPUS.

See, [Connecting to the University of Texas VPN](#), for detailed instructions on how to setup and use campus VPN

"MobaXterm is an enhanced terminal for Windows with an X11 server, a tabbed SSH client and several other network tools for remote computing (VNC, RDP, telnet, rlogin)". - [MobaXterm Website](#)

MobaXterm is a good, free, Windows-based application that can be used to connect to ECE Linux servers remotely and launch engineering applications such as MATLAB with a graphical user interface (GUI).

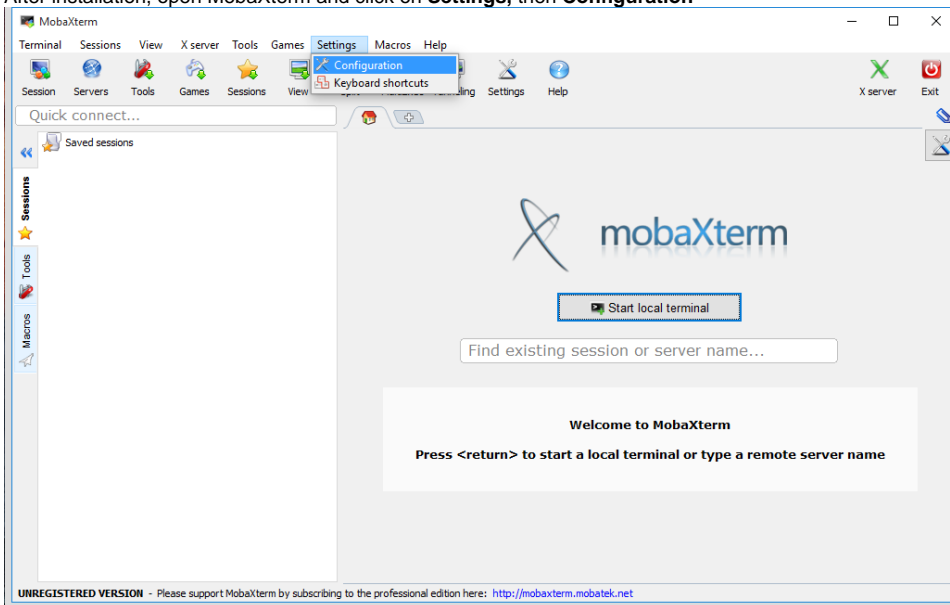
**IMPORTANT** - After installation, a couple of easy steps are needed to configure MobaXterm to prevent your session from being vulnerable and open to unauthorized connections.

## Installation

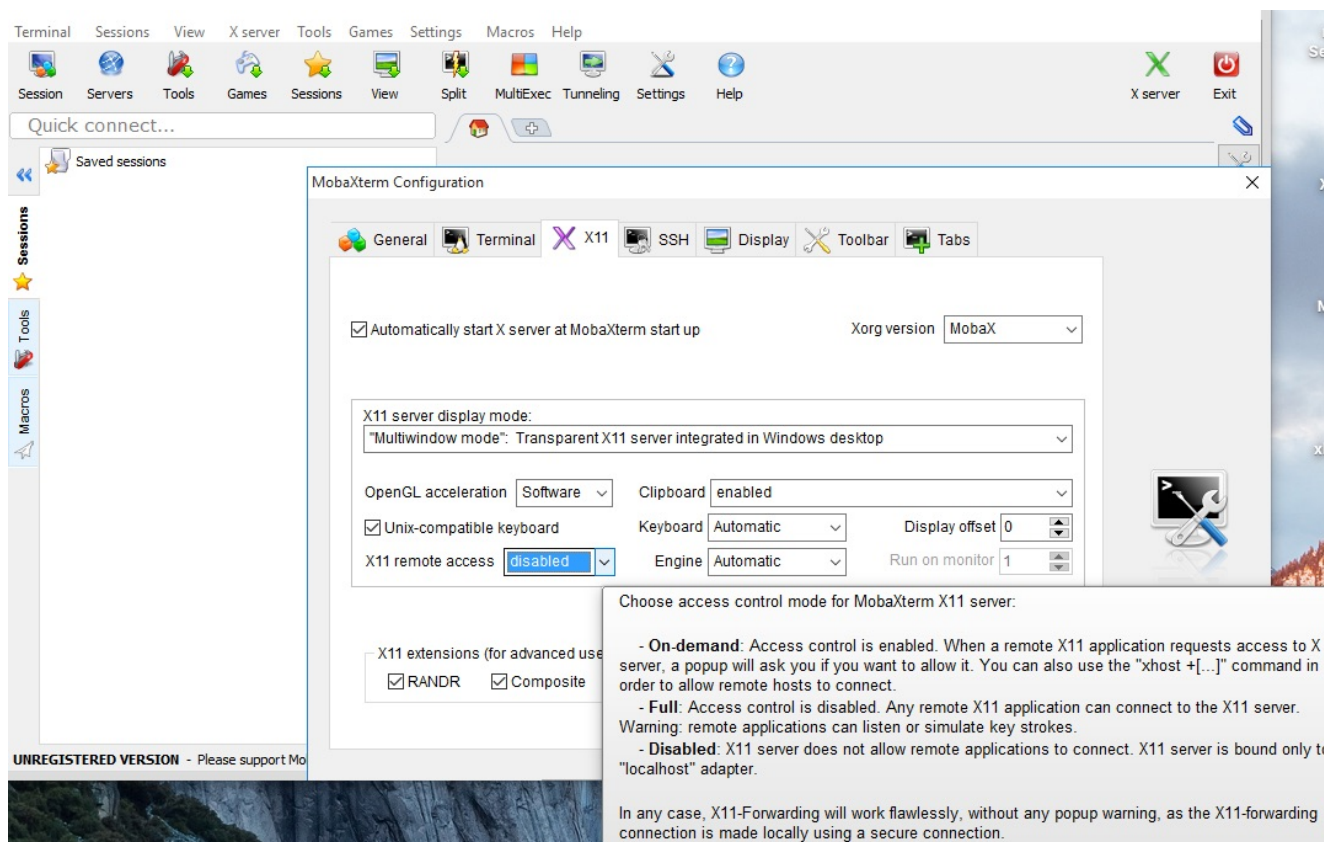
- Download MobaXterm (personal edition) from <http://mobaxterm.mobatek.net/download.html>
- Locate the downloaded installer and double-click to begin the installation process
- If prompted for administrative credentials, enter the username and password of an account with administrative privileges.

## Configuration

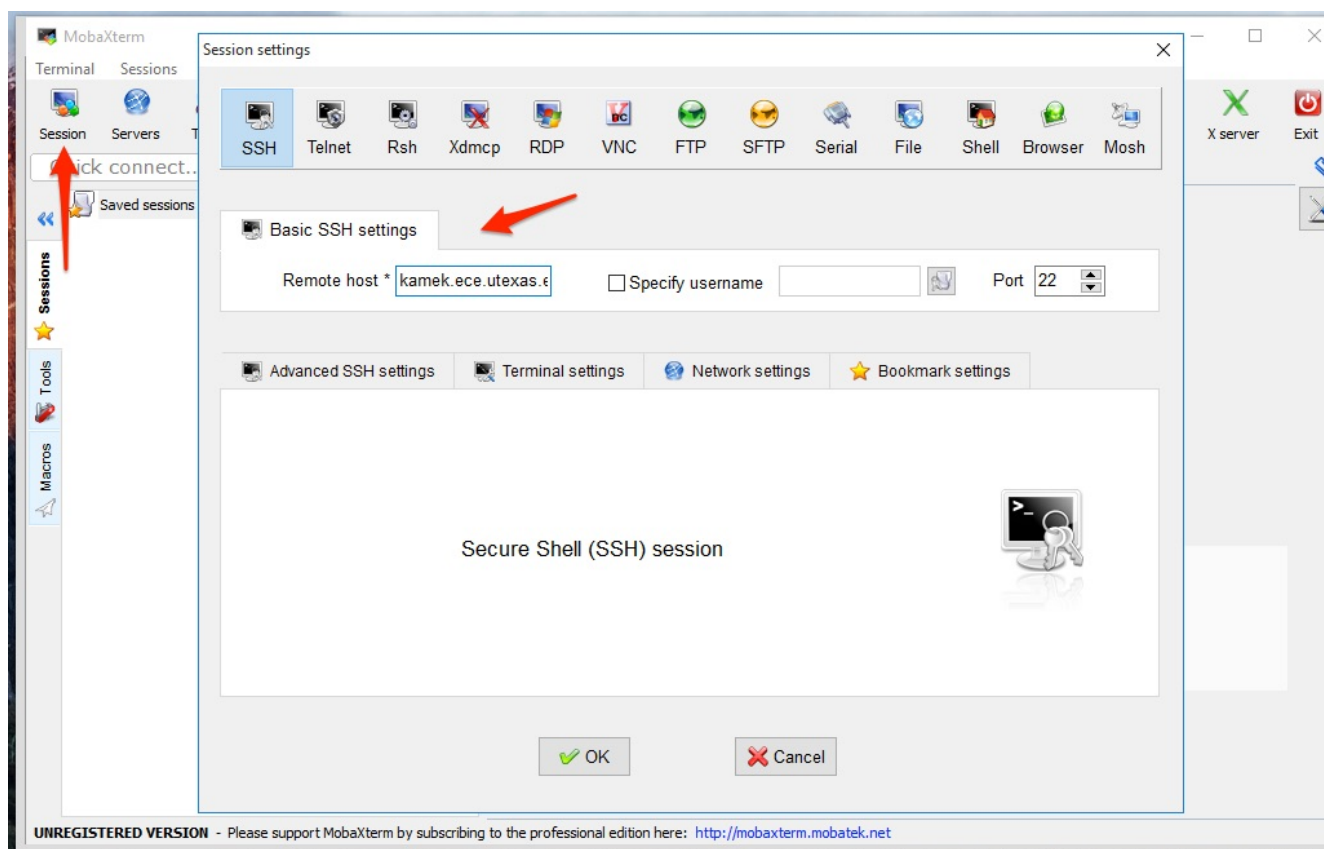
- After installation, open MobaXterm and click on **Settings**, then **Configuration**



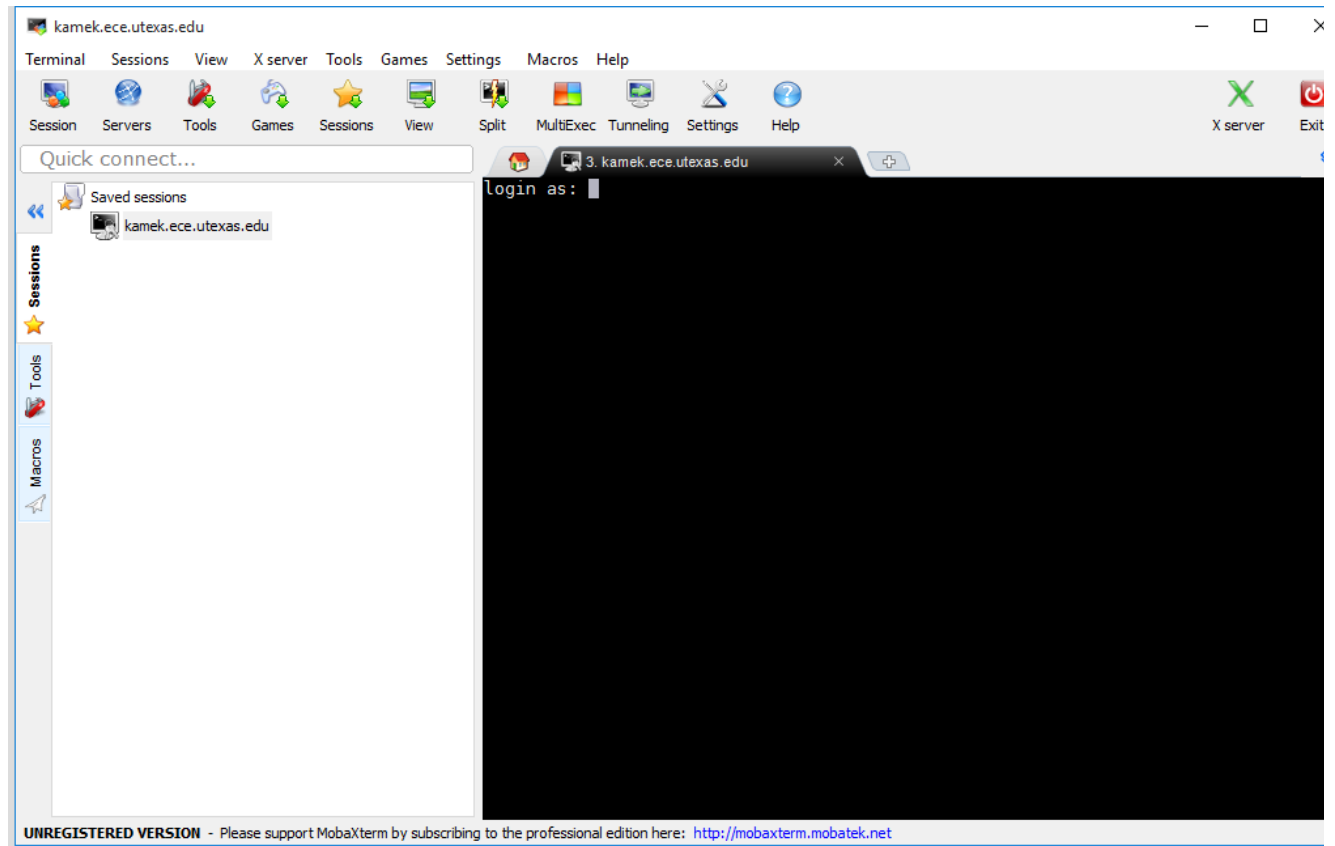
- Select the **X11** tab and in the drop-down menu next to **X11 remote access**, select **disabled**. This is important!



- Be sure to click on the **OK** button after this selection to save your selection
- Next, create an SSH session and enter an ECE remote Linux server host. For a complete list of ECE remote Linux service, please visit - [ECE Linux Application Servers](#)



- Click **OK** to save your session.
- You will then be prompted with a Login screen to the specific ECE server host chosen. You will also see a list of **saved sessions** in the left column



**Be sure to successfully log off your Linux session. Failure to do so will leave multiple, open sessions that could be taking up limited licenses. ECE-IT will monitor and disable multiple inactive sessions.**