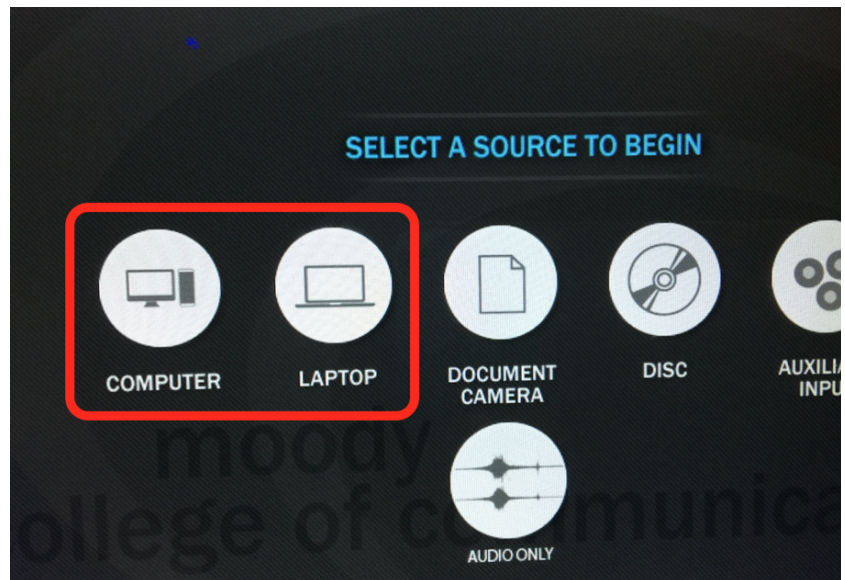


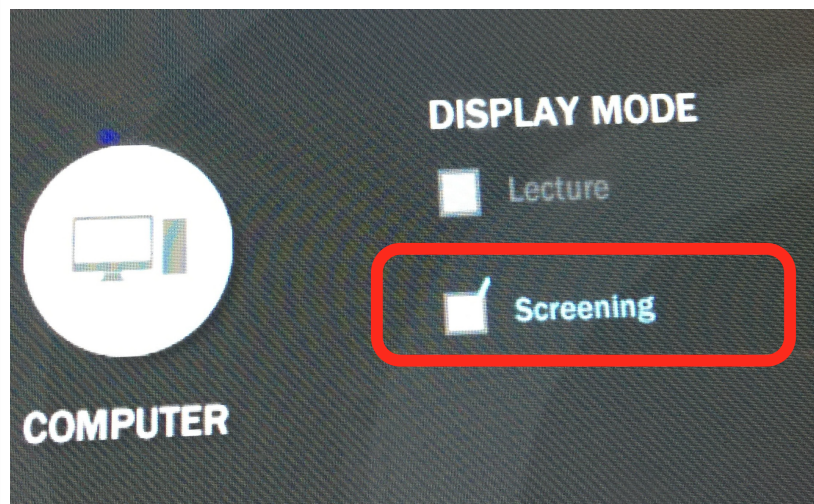
Projector Calibration Check with HD Color Bars

This is an easy check to make sure you are looking at a calibrated image on the projector

On Crestron Touch Panel pres Computer or Laptop depending on what source you are screening.





Select Display Mode > Screening



SMPTE_Bars219-2002_PP.mov

1. Download this Color Bars Quicktime

SMPTE_Bars.tif	Or use this SMPTE Tif file
2. Open the Quicktime in VLC Player	
3. Play in full screen by double clicking in middle of Bars in the window	

If the bars do not look correct contact **tech staff** to check the projector advanced settings against this calibration matrix wiki

[Classroom AV Calibration Matrix](#)