

Angie's Protocol - Photoshop Scripts instructions

Post processing stacked shot images uses a variety of scripts. There used to be 5 scripts, but now we're down to 4. These scripts are found on the JSG-NPL drive at this location:
DocLib\code_and_scripts\PhotoshopScripting\NSF_Scripts\Production

[NPL Home](#)

[Photography Home](#)

[NPL Common tasks](#)

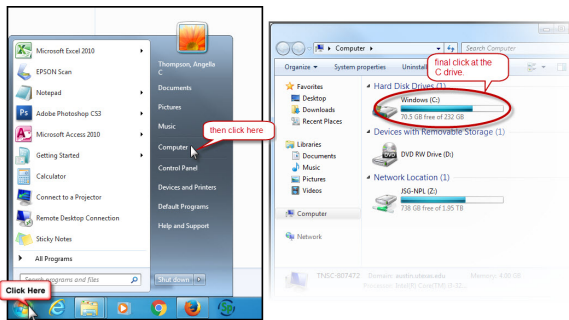
There are 2 groups of scripts is use. First are the Scale Image scripts. These scripts give you a pop up window that lets you tell photoshop how big a line you drew was. There are 2 versions of this script, one regular and one for microfossils. The microfossil script lets you deal in fractions of millimeters whereas the regular one will not.

The second group is the Draw Scale group. This script takes the input from the Scale Image and uses it to automatically create a scale bar at the bottom (or side) of the image, while embedding a scale for use with the measure tool.

Getting the scripts to work:

Next: [Adding hotkeys to make running scripts easy](#)

First, make sure you have the file open where the scripts reside. Navigate to the C drive on your computer.



Now, this is a little confusing. For some computers, the scripts folder is in one place, and on other machines its in another. So to be safe, just put the 4 scripts in both the following places:

C:\Program Files (x86)\Adobe\Adobe Photoshop CS3\Presets\Scripts

C:\Program Files\Adobe\Adobe Photoshop CS3\Presets\Scripts

If you are missing one of those locations, don't sweat it. That just means you only have one option to pull scripts from.

When you open Photoshop, you'll see the scripts posted in the File --> scripts menu.