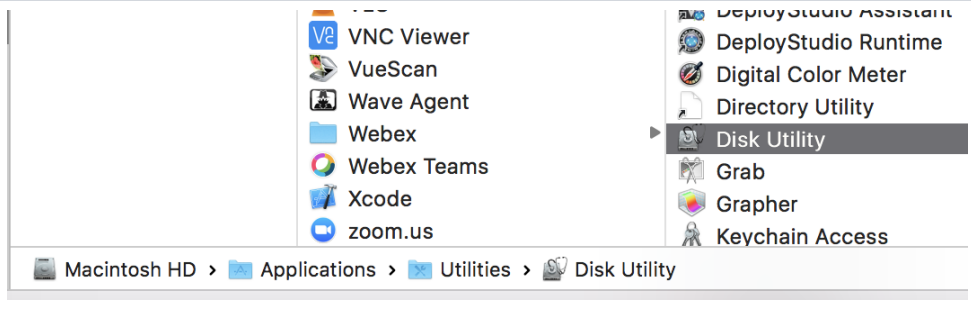
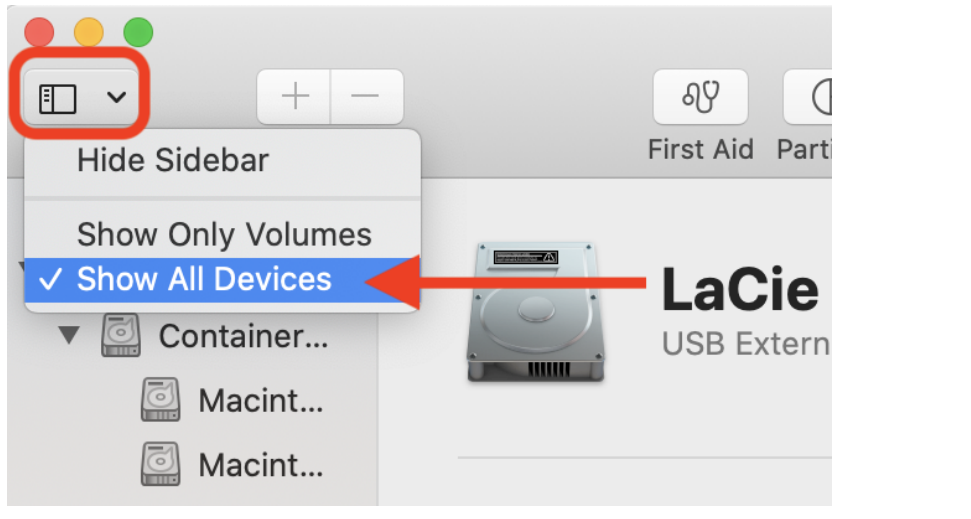
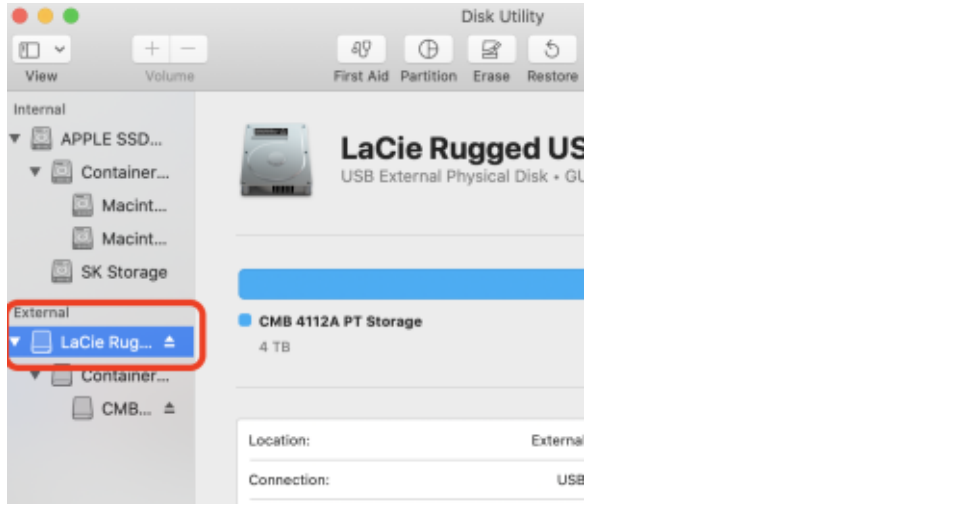



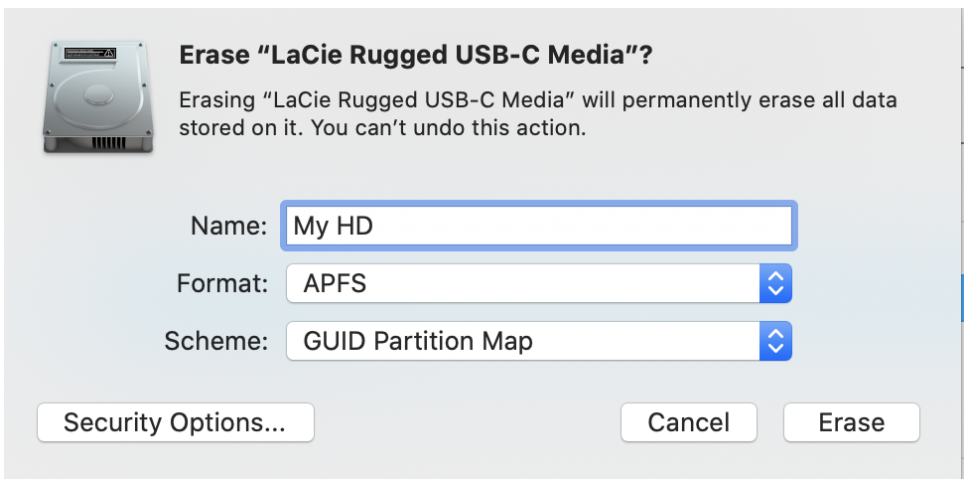
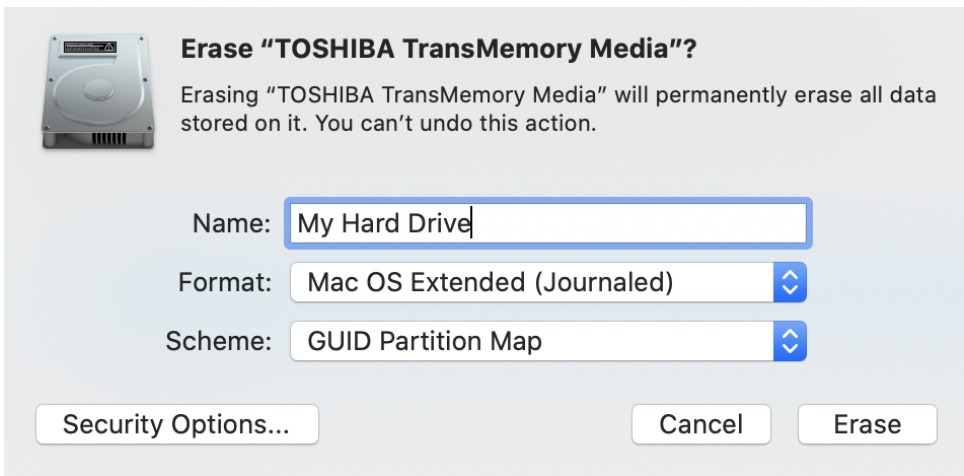
How to format Hard Drives using Windows and Mac Operating Systems

NOTE THIS WORKFLOW WILL SHOW YOU HOW TO FORMAT YOUR HARD DRIVE WIPING ALL DATA OFF OF IT -

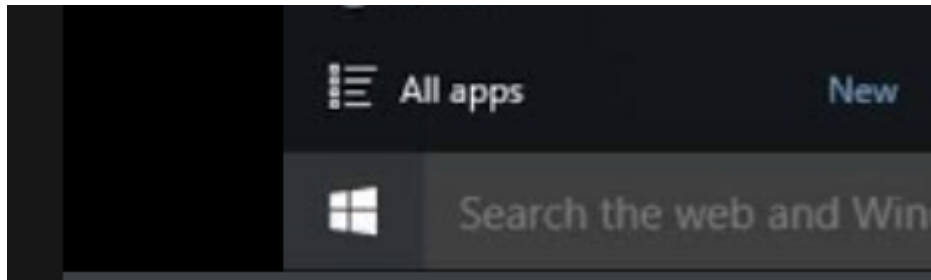
MAKE SURE THERE IS NOTHING ON YOUR HARD DRIVE YOU NEED BEFORE PROCEEDING

How To Format a Hard Drive for Macintosh Computers

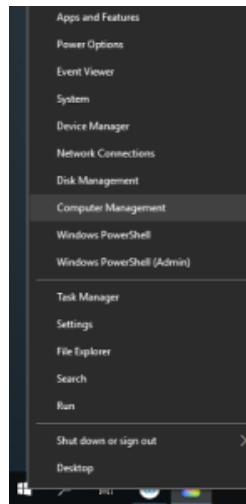
<p>Open Disk Utility</p> <p>Go to Macintosh HD</p> <p>Applications >Utilities></p> <p>Disk Utility</p>	
<p>in Disk Utility></p> <p>Click on the sidebar and choose</p> <p>>Show All Devices</p>	
<p>Pick the drive you want to reformat but choose the</p> <p>>External top volume in the display as shown here</p>	

<p>Click Erase</p>	
<p>Name the Hard Drive</p> <p>Choose the Volume Format: as APFS</p> <p>Scheme: GUID Partition Map</p> <p>Erase in the lower right corner to erase the drive</p>	
<p>You can also use</p> <p>Format: Mac OS Extended (Journaled)</p> <p>Scheme: GUID Partition Map</p> <p>Then Click Erase</p>	

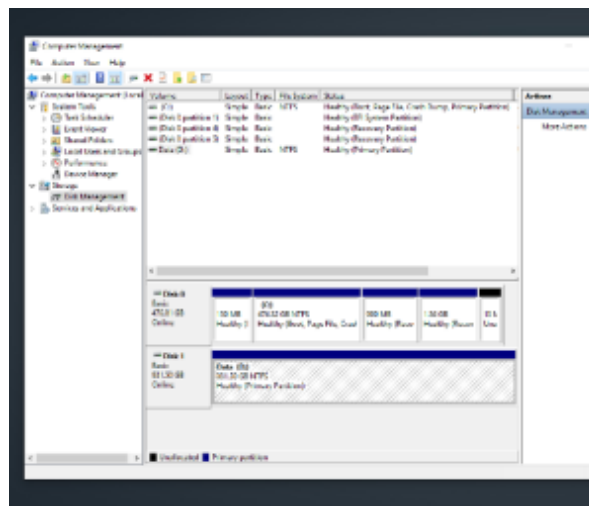
How to format a hard drive in Windows.

<p>Right click the windows icon in the lower left corner and go to Computer Management</p>	
--	--

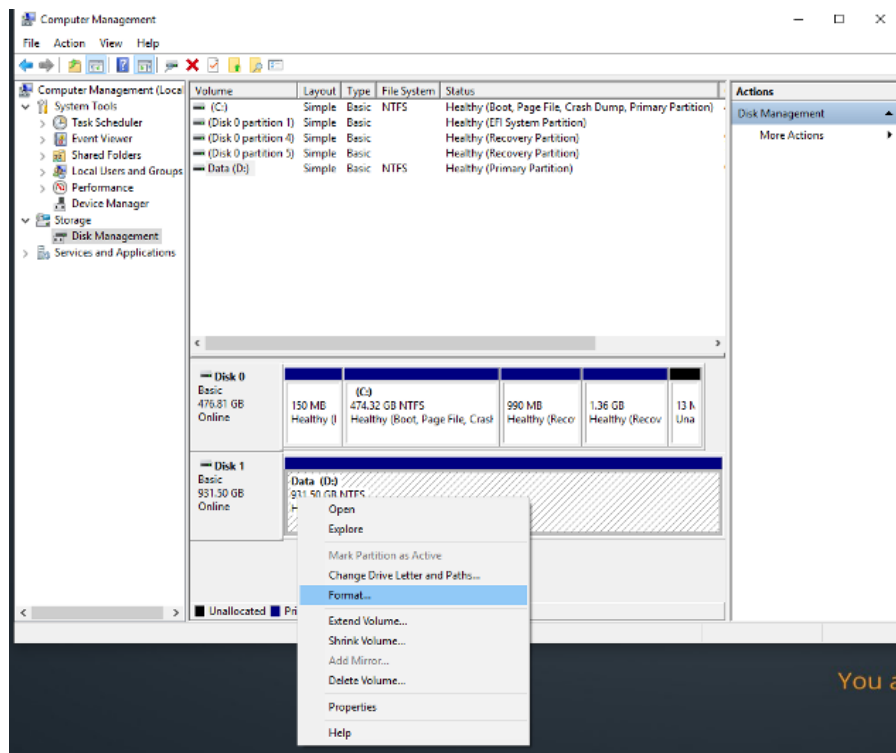
Go to Disk Management

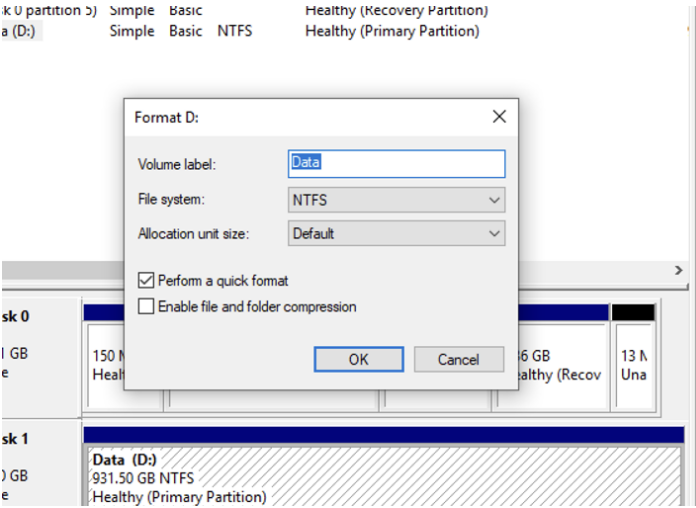
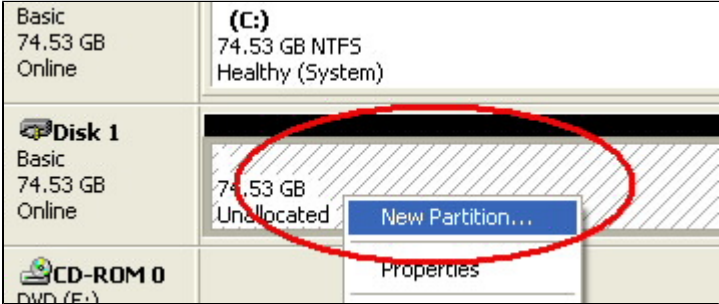
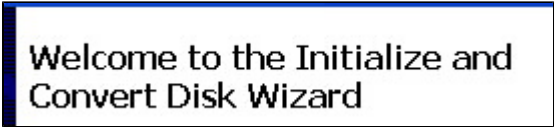
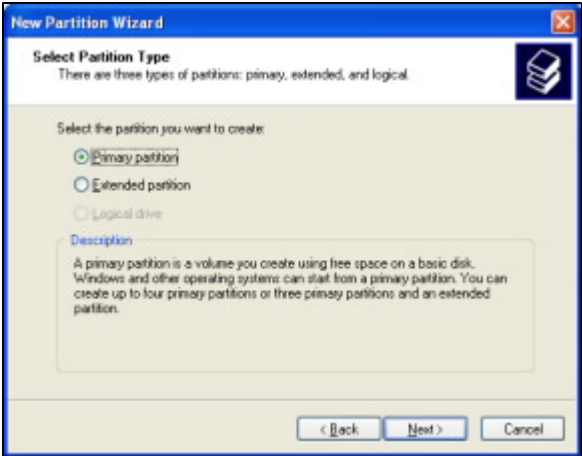


Right click the D drive or similar might have a different letter but probably D

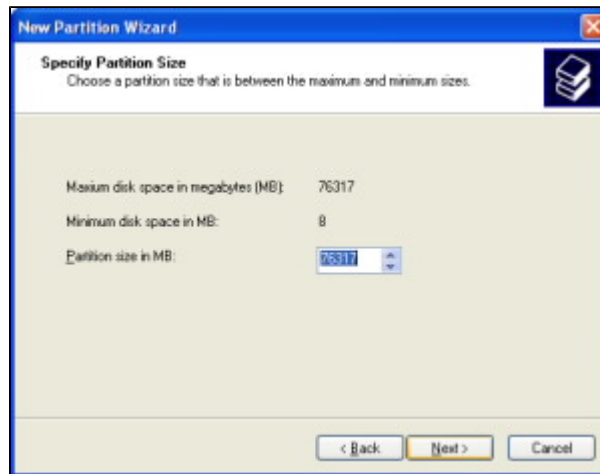


Choose Format name the drive and hit OK



<p>Choose - Name</p> <p>File System - NTFS</p> <p>Allocation of Unit - Default</p> <p>Choose Quick Format - hit OK</p>	
<p>For new disks not currently formatted for Windows you can use the Formatting Wizzard</p> <p>Click on cancel. If the disk says Not Initialized then right click on the drive and initialize it by clicking on Initialize Disk. Click OK at the next menu to complete the process.</p>	
<p>The next step is to format. Right click the drive in the stripped area and click New Partition</p>	
<p>Click Next at the Convert Disk Wizard</p>	
<p>Select the Primary partition and click Next</p>	

Specify Partition Size to the default which is the capacity of the drive and click Next



The screenshot shows the 'Specify Partition Size' step of the New Partition Wizard. It displays the maximum disk space (76317 MB) and minimum disk space (8 MB). The partition size is set to the default value of 76317 MB. The 'Next >' button is highlighted.

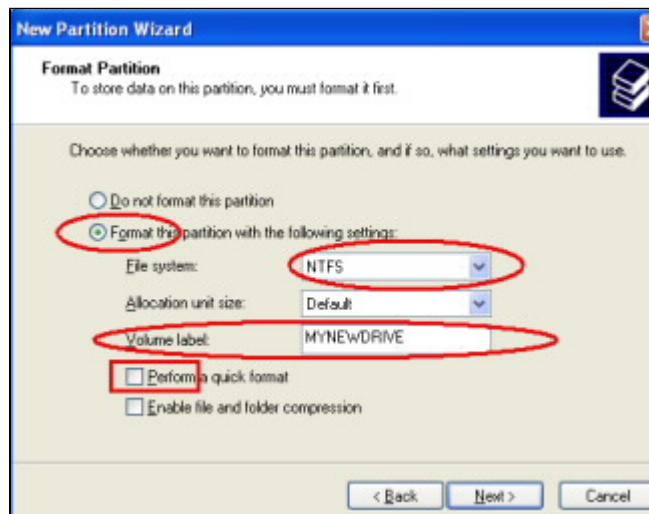
Assign a drive letter or choose the default then click Next

Select Format the partition with the following settings

USE NTFS

NAME THE DRIVE UNDER VOLUME LABEL

Make sure that Perform a quick format is unchecked then click Next.
Click Finish to start the formatting process. Process will take @ 1.25 hours for 200 gigs (for example)



The screenshot shows the 'Format Partition' step of the New Partition Wizard. It prompts the user to choose whether to format the partition. The 'Format this partition with the following settings' option is selected. The settings shown are: File system: NTFS, Allocation unit size: Default, Volume label: MYNEWDRIVE. The 'Perform a quick format' checkbox is unchecked. The 'Next >' button is highlighted.