

4D EIKI Projector Instructions

susanne.kraft@austin.utexas.edu

10/13/09

EIKI Film Projector User Guide

NOTE: DOUBLE SPLICES ARE NOT NECESSARY AS LONG AS THE SPLICES ARE DONE WELL, BUT BRING A SPLICER, SPLICING TAPE AND LEADER to repair splices and breaks that may occur while projecting. WILL ALSO NEED 2 SPLIT REELS to use this double system projector.

Check plug to see if Video Projector is plugged in. Both projectors can't be plugged in at the same time.

Make sure use a take up reel with at least a 4 inch hub or larger. Can't use split reels as take up reels.



Can and should use split reels for the supply feed reel. Put film on a split reel and put sound mag on a split reel as well.



Film needs to be unwinding clockwise with sprockets closest to you when facing the projector. Emulsion (dull) side needs to be on the inside of the unwind. Shiny side out.

Thread the film off the supply reel and put the film into the gate so that the hole punch shows through the window of the projector gate.



This is the Threading Diagram to follow but see pictures below for more detailed description.

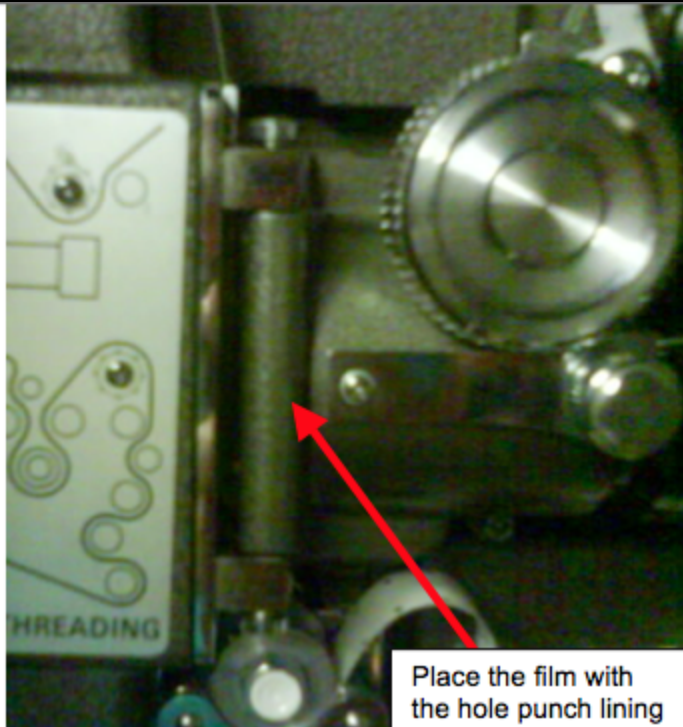


Keep set to the Over 2000 ft reel selection but to release tension in the reel for threading set to the Under 1800 ft. reel selection



Spool off source reel and thread through the first gate and into the lens gate. Make sure the loop here is as tall as the top of the projector.

This loop pictured
may be a little big.



Place the film with the hole punch lining up with the window in the lens gate



Window where the hole punch will line up in the gate.



Pull down the lever on the gate to open it in order to thread the film after the hole punch is lined up with the window in the lens gate.



Thread through the lens gate then through this gate located below. Make sure there is a loop that is a little bigger than your thumb here.

Close the gate to hold film in place with the hole punch lined up with the window in the lens gate.



Close the lens Turret so that it is over the film.



Thread the film as show around these spindles. There are not sprockets on these but there are sprockts on this gate. Make sure it is closed after film is threaded.



Follow the threading path as show here.

Winds around these lower spindles.



Close up
of the
spindles
above.

Show the Annotations Toolbar



Continue around the tape up lever here

This lever will have to be steadied while film first starts rolling.



Wind on to the take up reel.



Leave on
Mag
With
Optical
Sensor
turned off.
If running
a single
system
playback
then turn
on and
switch to
OPTical
sound.



Leave
Current set
to 30 %

The higher
the
Current
setting the
brighter
the throw.

Turn on
the main
projector
power.



Turn on
Power
Button
only.

Make sure
the take up
reel is
taught.
Might need
to lift the
lever
shown
above to
engage
the motor.



Make sure
this
Sensor
switch is
off.



Press Trial Film Advance to test film playback.



Will have to ride this lever until film starts to roll. Could pull the film and break if not moving with the film. Gently ride this with your hand just till film starts rolling.





To start film rolling. Press Power then lamp. Light the lamp and then press Forward to start the film rolling forward then open the douser by pressing the Douser button.

Ignore Auto and Changover .



Focus the image using this knob.



This knob on top of the projector will adjust the gate up and down.



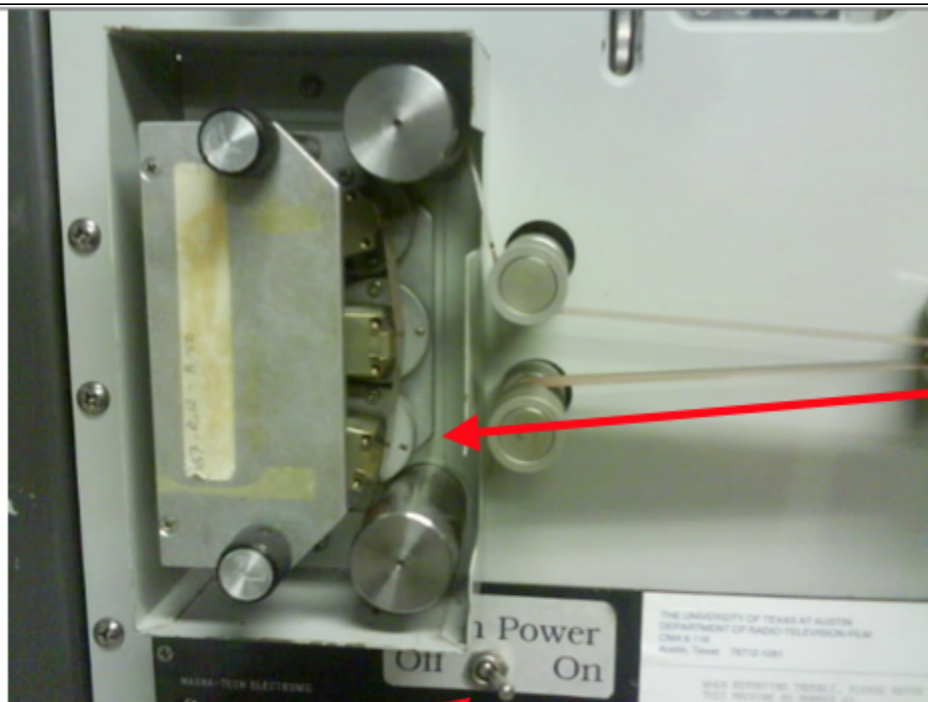
The next step is to set up the "Audio Playback Dubber"



Thread the mag stock off the reel with the dull side coming off the inside of the reel.



Thread the mag stock through the spindles as shown here.



Turn on the Main Power

Thread over the heads as shown here.

Hole punch should be lined up with the 3rd head.

Slide the mag stock at the sync point under the metal plate so the hole sync punch is lined up right on top of the third sound head of the recorder.



Press DE-CLUTCH to manually adjust framing of the hole punch using the big knob shown below.





Manual adjustment knob for moving the mag stock manually.

Slide the mag stock at the sync point under the metal plate so the hole sync punch is lined up right on top of the sound head (3rd head) of the Mag Dubber.



Lift Lever to engage the torque moter so mag stock becomes taught.

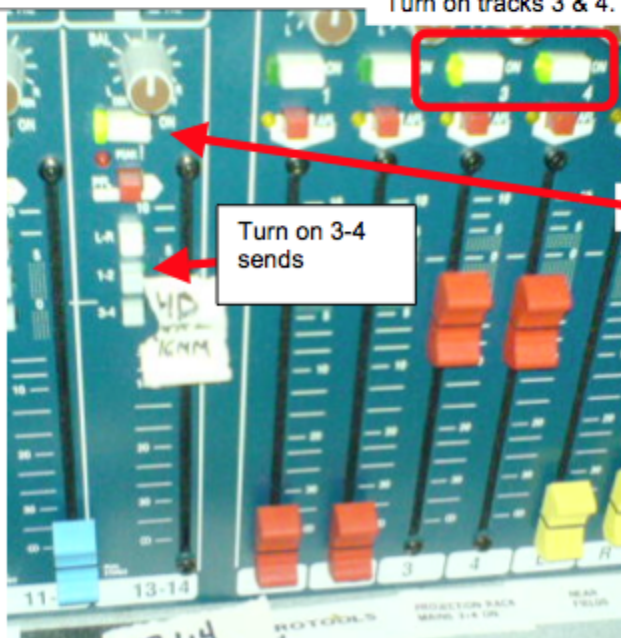


Press INT. ON to turn on Interlock. This will track the movement of the projector and roll the Mag automatically.



Turn on the Film Projector Lamp. Power should already be on from earlier. Next turn on the LAMP. Make sure lamp ignights. To start the film rolling press the FORWARD button. Make sure to ride the take up reel lever. Once the film is rolling steadily then turn on the DOUSER to expose the film to the lamp.

REMEMBER IF THERE IS A PROBLEM TURN OFF THE DOUSER SO FILM WON'T GET BURNED.



Turn on tracks 3 & 4.

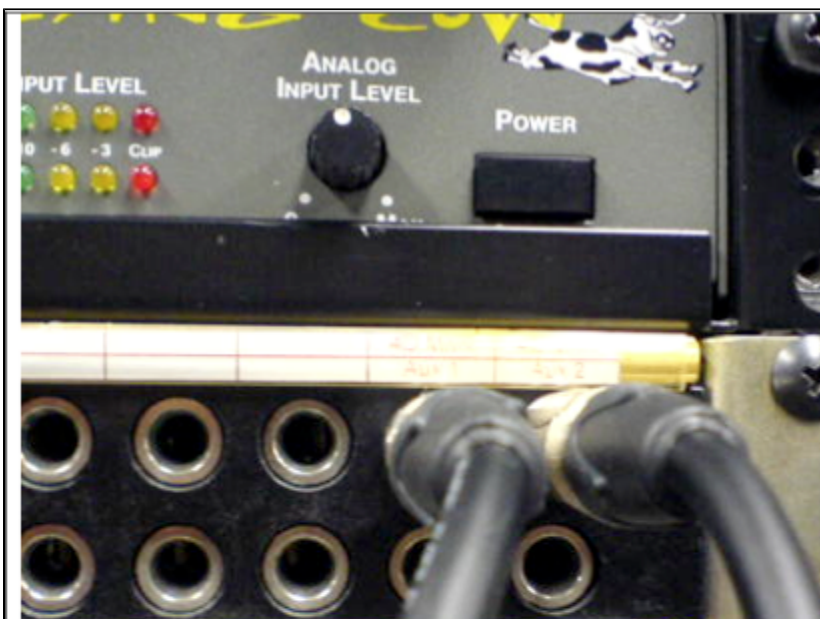
Turn on track 13 / 4.

Turn on 3-4 sends

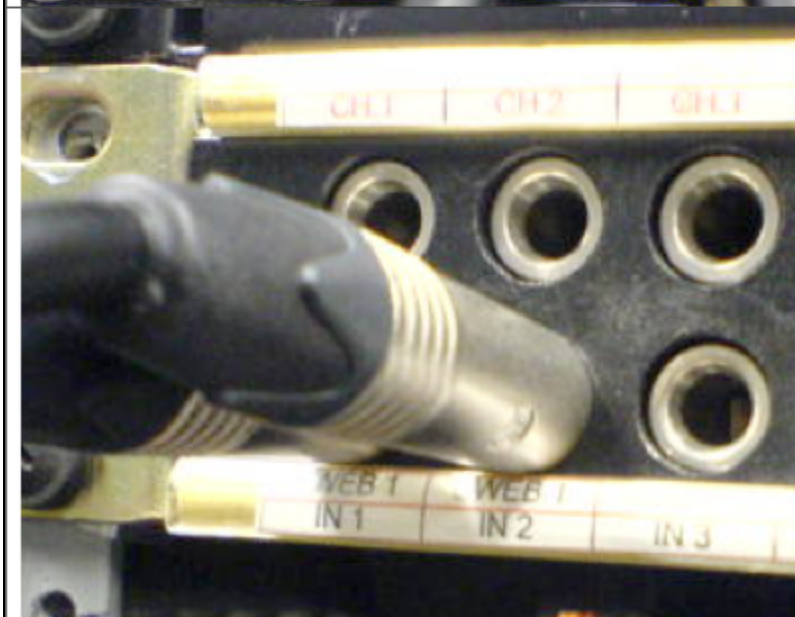
Set up the 4D mixer to ouput the sound from the projector mag playback.

Turn on Channel 13/14 make sure that 3-4 (audio send) is pressed.

Turn on Channels 3 & 4 on Main outputs.



In 4D control room pull patches from the protocols out into the soundweb and patch the 4D Aux 1 and 2 out into the Soundweb Aux 1 & 2 input



Patch into the Soundweb inputs marked

Web 1 In 1 and Web 2 in 2



In 4D studio change the input of the SoundWeb to PatchBay from AV Rack

Push this button to toggle back and forth



On the back side of the Film Projector is the audio Line output

Use this with Single System playback not for Double System.

See this help doc. Online
http://www.utexas.edu/coc/rft/skraft/facilities/pdf/steenbeck/Winding_bench_how_to.pdf

When finished rewind film and mag on the rewinding bench

Turn off Lamp but leave FAN on for 10 minutes.
 Turn off Sound recorder.
 Turn off projector breaker.
 Turn off fan after 10 minutes.



