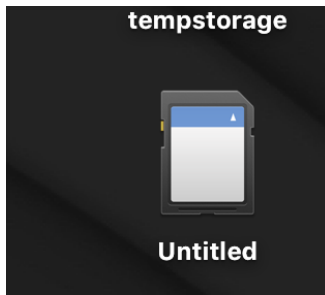


AVID - Sony A7SII or Canon C100 AVID Project Setup

AVCHD Workflow

Mount
the
SDHC
card
in
your
compu
ter.

Insert
card
in
card
reader
or
SDHC
slot
and
it'll
mount
to the
desktop



Back up the contents to another hard drive with the file structure exactly as it is on the card.

- 1. Make a folder on the backup HDD and call it "Card 1 - Day 1" or similar

rop
My Files
id Drive

▶

Folder icon

Avid MediaFiles

▶

Folder icon

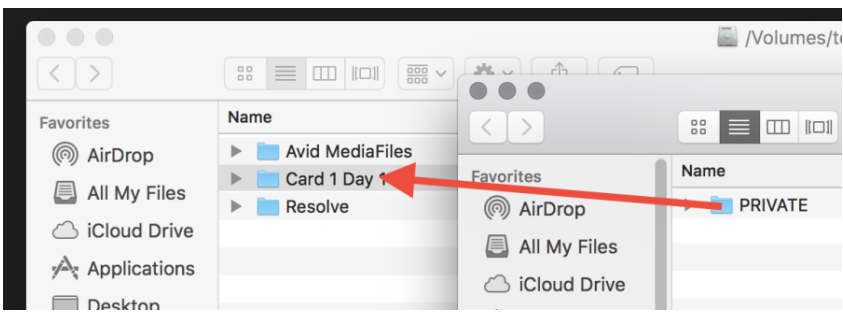
Card 1 Day 1

▶

Folder icon

Resolve

Copy the contents of the card to this folder exactly as they are on the card



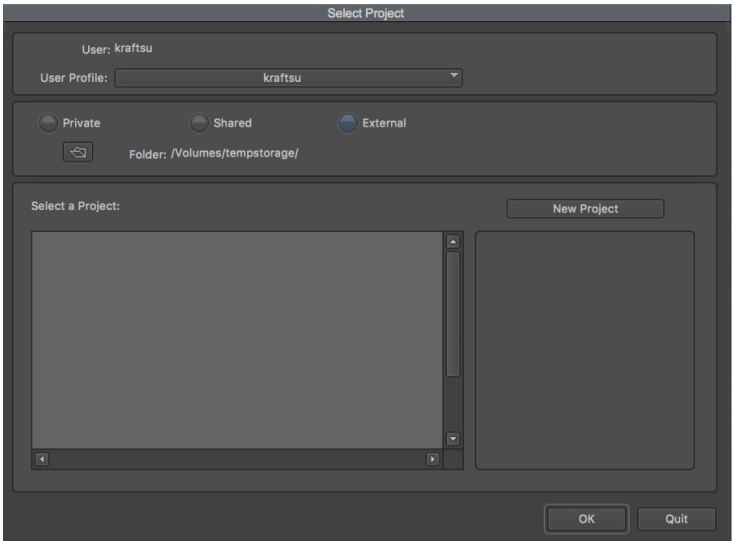
Copy the "Private" folder to the Card folder on the backup Hard Drive



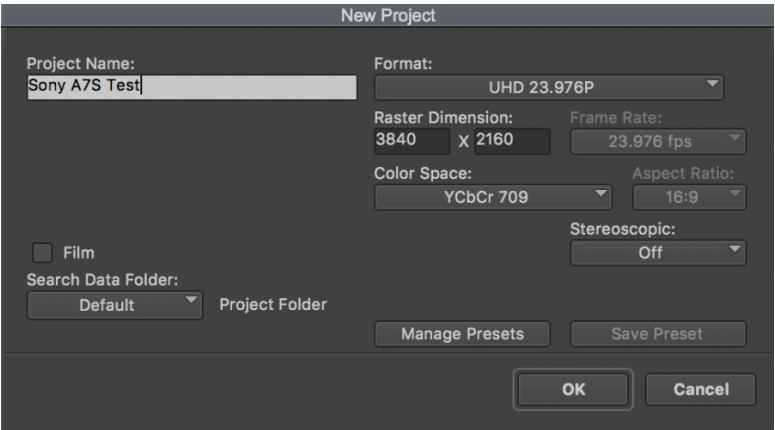
To process the files into the Editing Application - AVID

Open AVID Media Composer

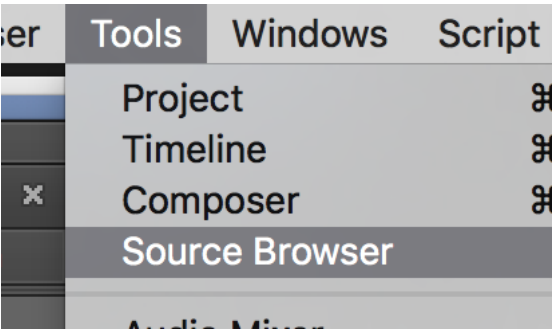
Make sure the project is saved to your HD and then select New Project



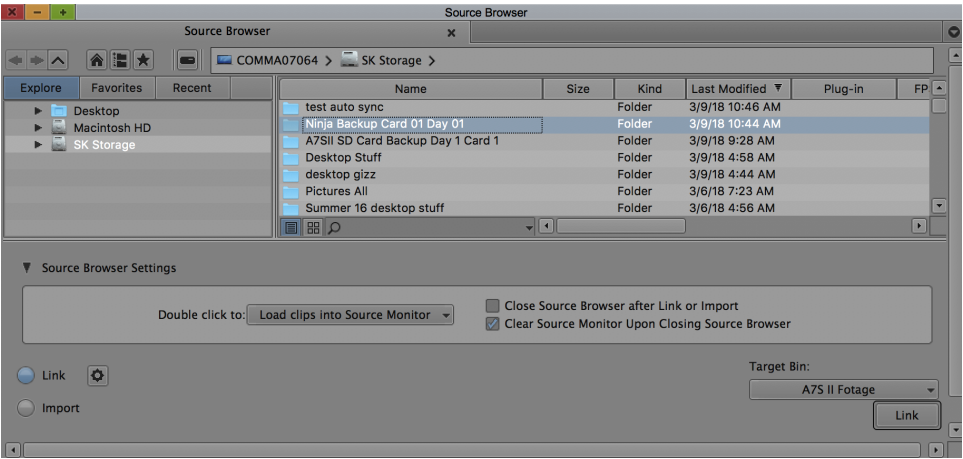
Name the Project and choose the UHD 23.976P



Go to > Tools > Source Browser

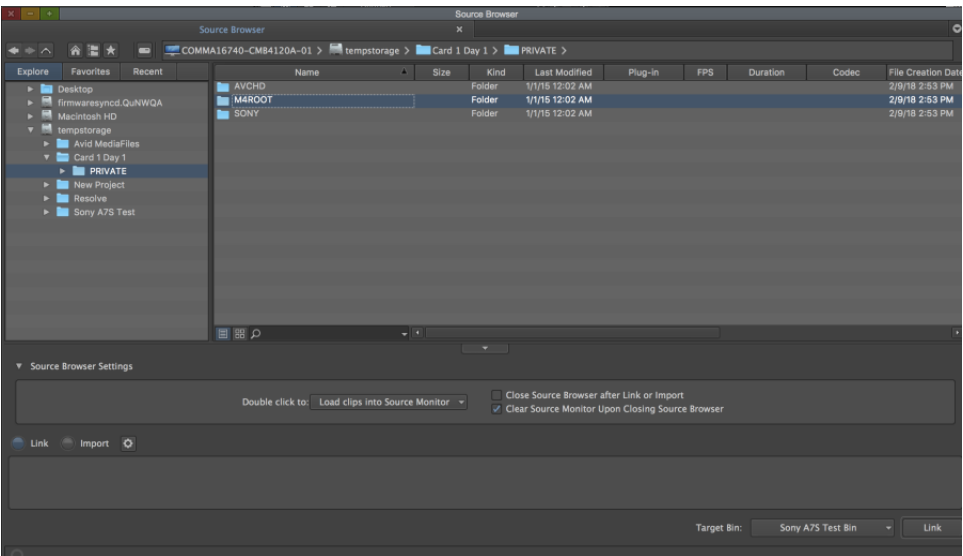


Navigate to the folder containing the Ninja files if you recorded to the Ninja Recorder (Most Common) Workflow

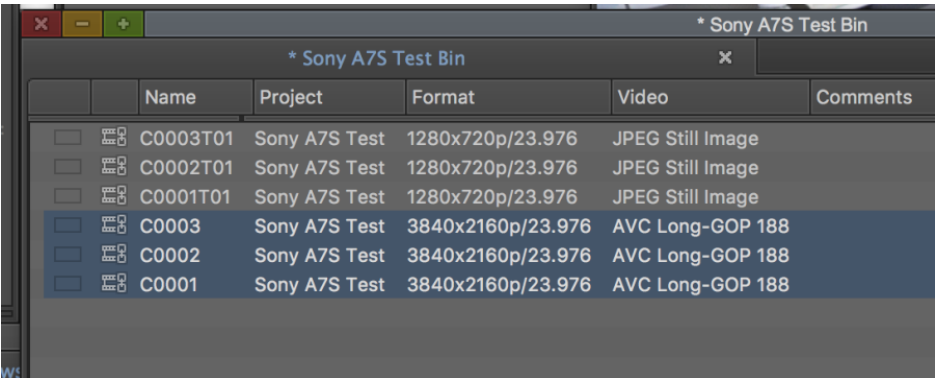


OR - IF YOU DID NOT RECORD TO THE NINJA AND ONLY TO THE SDHC Card

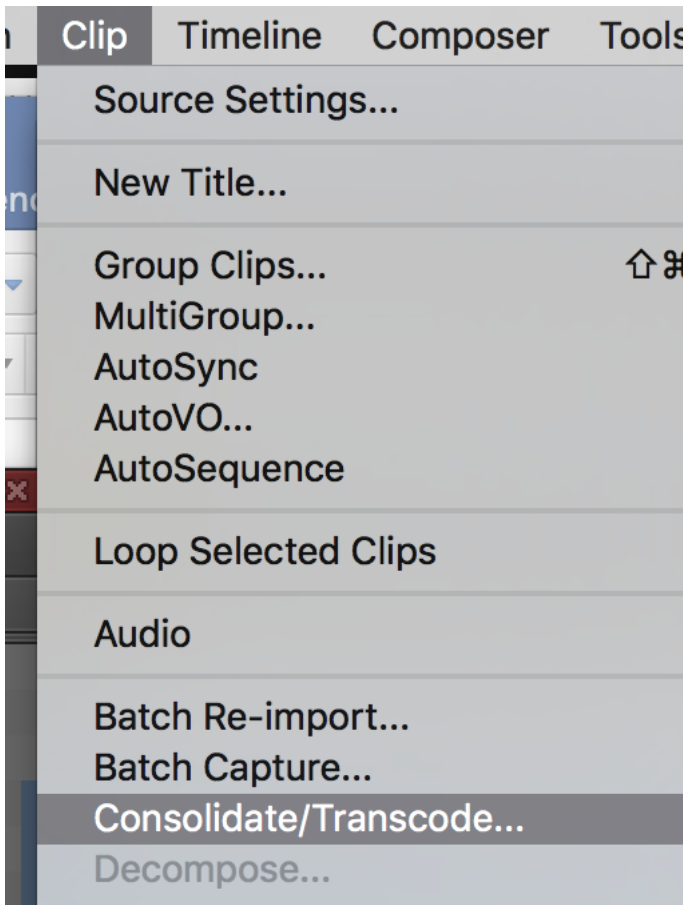
Navigate to the SD Card Backup Folder and choose the >Private>M4ROOT folder and choose Link



Select the files you want to use in the project and transcoded them to work in AVID for offline editing.



Once
select
ed
choos
e
>Clip>
Conso
lidate
/Trans
code



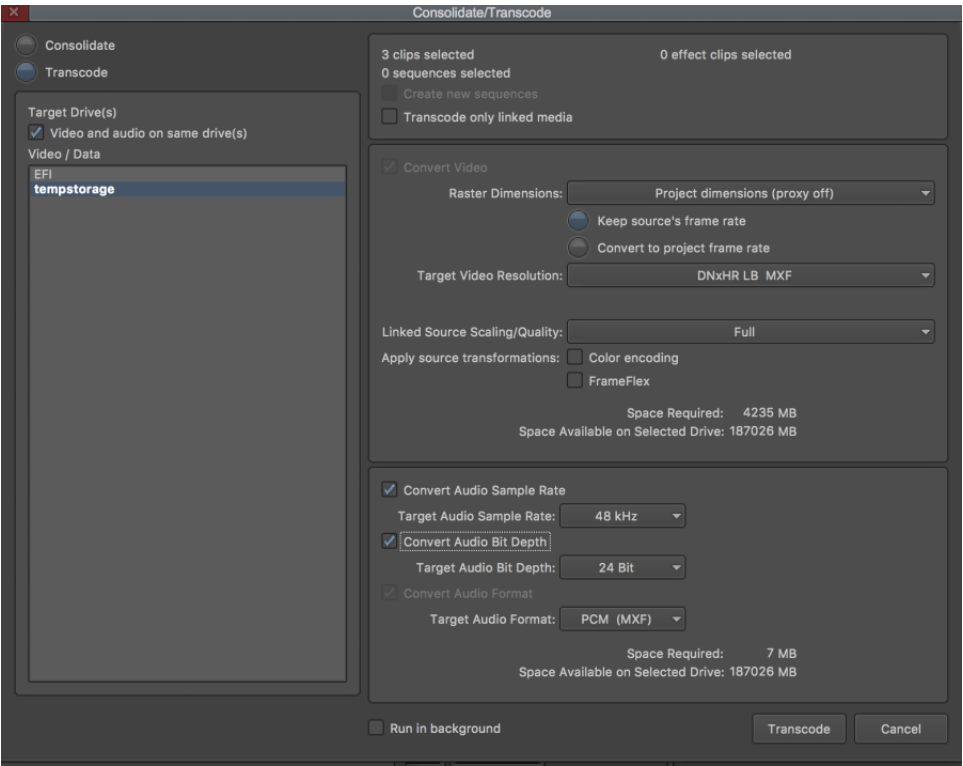
Choose Transcode

Select the hard drive to store the transcoded files.

Choose to keep the source's frame rate

Target Video Resolution DNxHR LB MXF

Convert the audio to 48K 24Bit Click Transcode



The resulting file will be the same raster size but will now be an AVID DNxHR Codec.

Sony A7S Test Bin					
Sony A7S Test Bin					
	Name	Project	Format	Video	Co
	C0003.new.01	Sony A7S Test	3840x2160p/23.976	DNxHR LB (3840x2160)	
	C0003T01	Sony A7S Test	1280x720p/23.976	JPEG Still Image	

Will also have a .new extension (these are the files you want to use for editing)

Do the same transcoding process to all the camera files you want to use in your AVID project.

A7S II Fotage			
A7S II Fotage			
	Name	Duration	Location
<input type="checkbox"/>	NJAFLM_S001_S001_T002.new.01		
<input type="checkbox"/>	NJAFLM_S001_S001_T001.new.01	3:20	/Volumes/SK Storage/Ninja Backup Card 01 Day 01/
<input type="checkbox"/>	NJAFLM_S001_S001_T002	24:20	/Volumes/SK Storage/Ninja Backup Card 01 Day 01/
<input type="checkbox"/>	NJAFLM_S001_S001_T001	3:20	/Volumes/SK Storage/Ninja Backup Card 01 Day 01/

Use these files with (.new) extension for editing