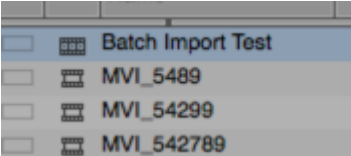
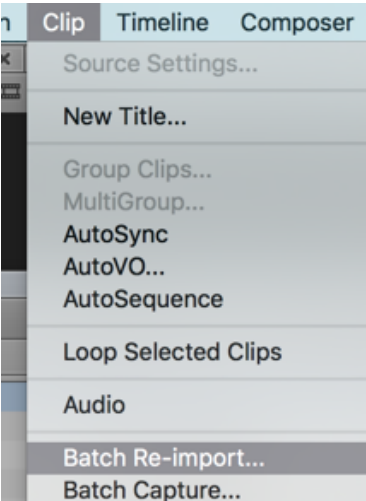

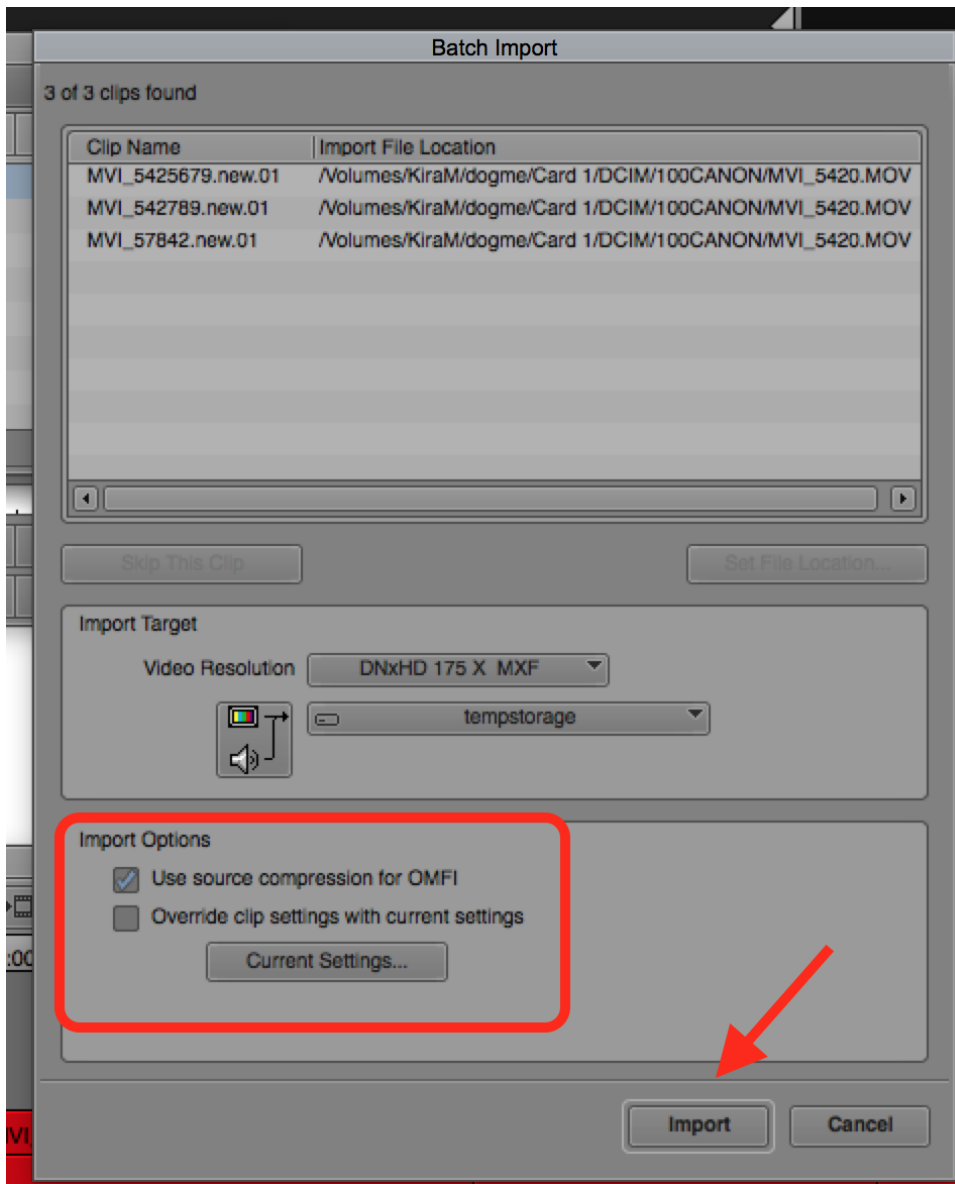


AVID - Batch Re-Import Footage

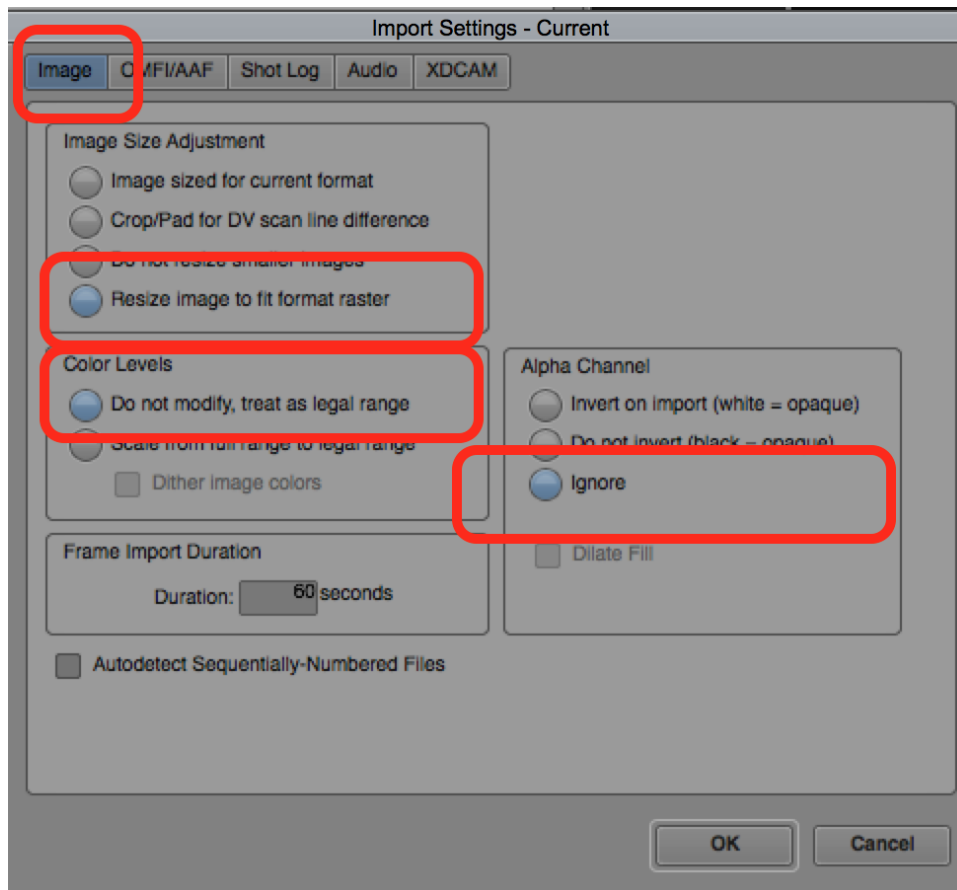
<p>To Batch import Clips back into AVID if your timeline went offline</p> <p>Select the sequence</p>	
<p>Clip > Batch Re-import</p>	
	

You can choose to use source compression to bring the files in "Natively" or less compressed. But this may not work for all footage. If it doesn't work you must set the "Current" Settings by selecting that button.



Choose the following settings

- Resize image to fit format raster
- Color Levels
- Frame Import Duration



- Ignore Alpha Channel
- Uncheck "Autodetect Sequentially - Numbered Files"

- The ncl ic k O K o n i m p o r t s e tti n g s m e n u t o a p p l y t h e s e e tti n g s

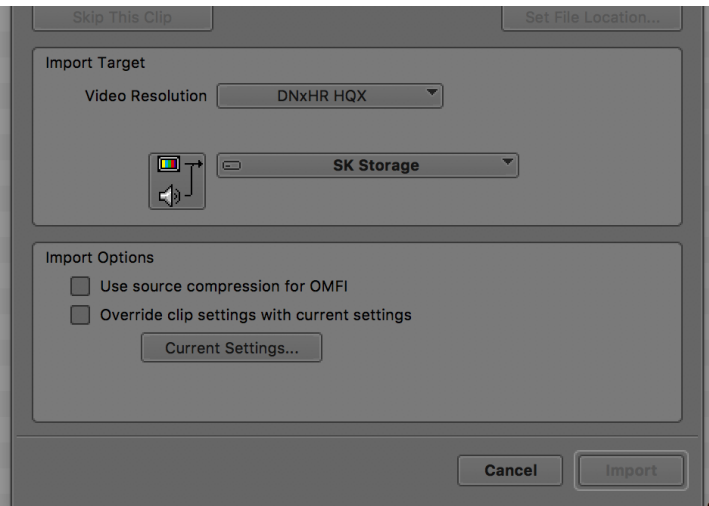
If you are working in a 2K or 4K project use the Video Resolution

Make sure the box Use Source Compression of OMFI in not checked and choose

DNxHR HQX

Choose the correct storage drive to save the footage and

Click Import



1080 project settings:
Make sure the box Use Source Compression of OMFI in not checked and choose the Resolution DNxHD 175 X MXF is set
Choose the correct storage drive to save the footage and
Click Import

