

Pro Tools - Focusrite RED4Pre Surround Sound setup CMB 4.112A and CMB 4.112B

Make sure HDMI box is set to MULTI at all times
It is located in the ISO box



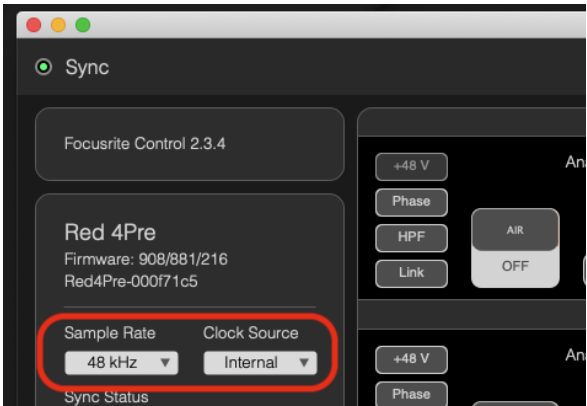
Open Focusrite Control if you haven't already
Note if installing on a new computer you might have to play with the permissions you allow access
Trick is to log in as admin and re-install making sure that you allow

No Hardware Connected

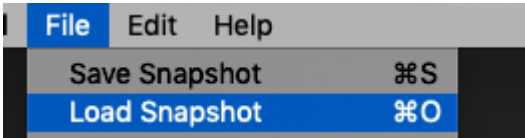
For No Hardware Connected on macOS– [click here](#).
document is also saved on software in the Focusrite folder

Once installed and running
Make sure that the FocusRite is synced to Internal
If you don't have it synced correctly no sound will come out.

Click on Device Settings
Red 4Pre
Clock Source make sure it is internal



Click on >File Load Snapshot
We have a snapshot for both A and B suites because they are different



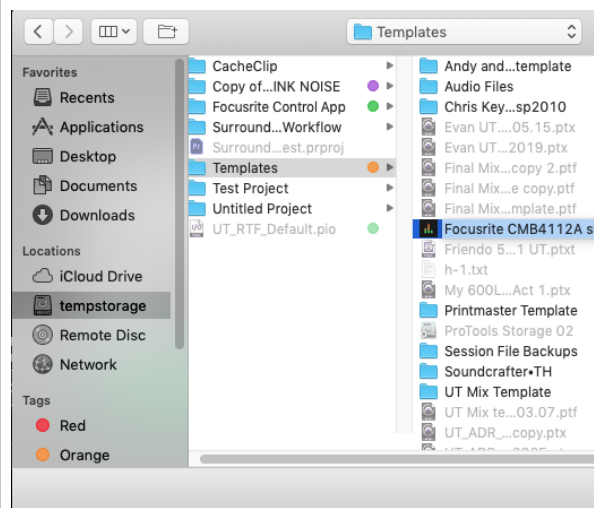
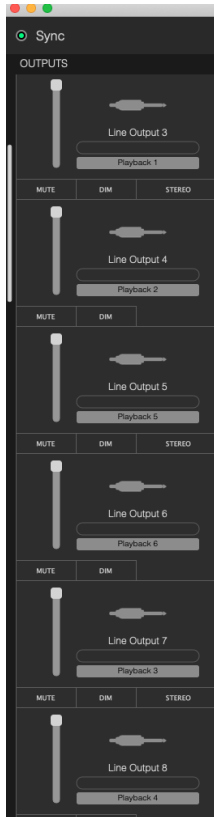
Go to >Tempstorage>

Focusrite Control Snapshots : NOTE THERE IS A DIFFERENT ONE FOR 4.112A and 4.112B

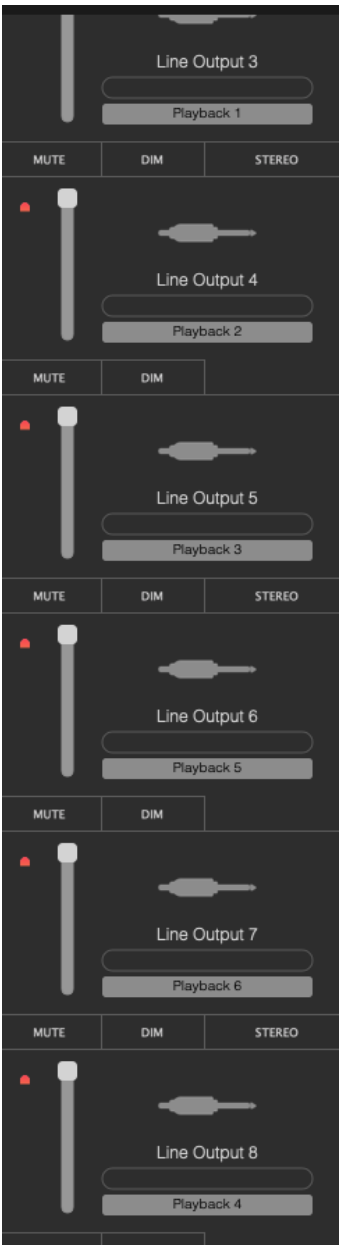
Click Open

Note in case it's lost here are the settings for

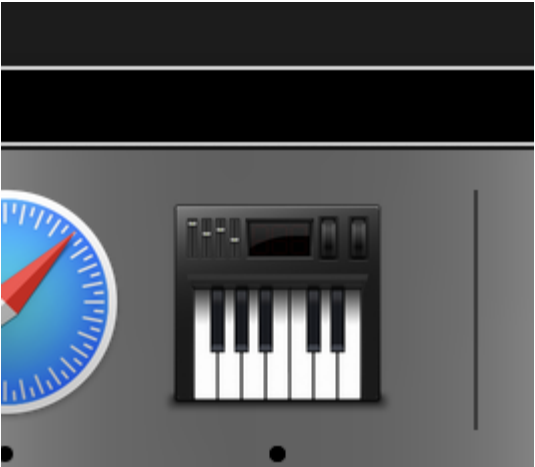
outputs 3-8 for Suite A



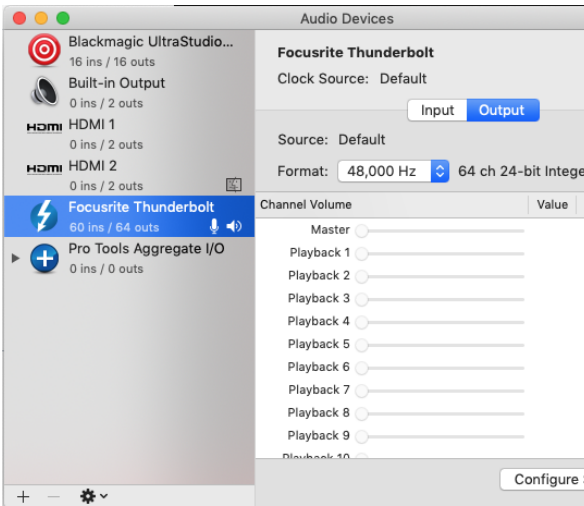
Note in case it's lost here are the settings for
outputs 3-8 for Suite B

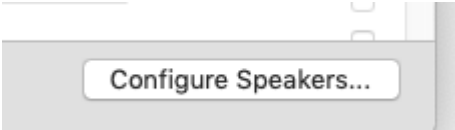
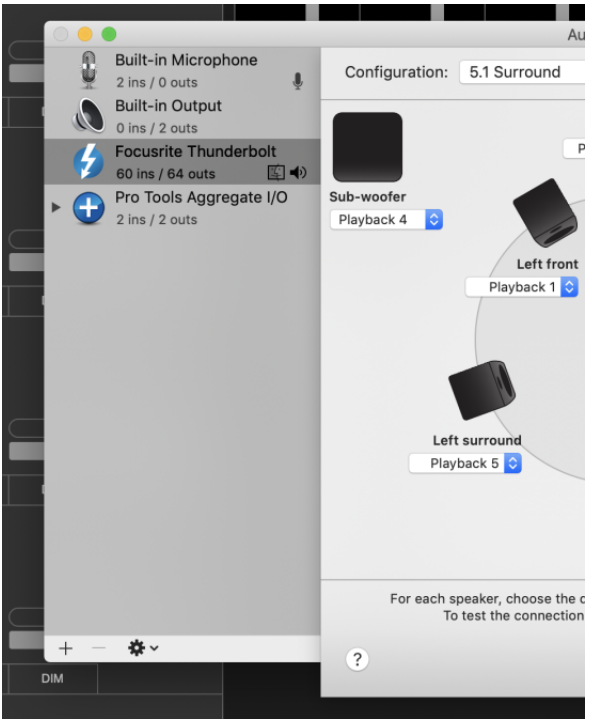
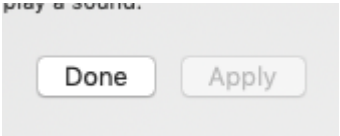
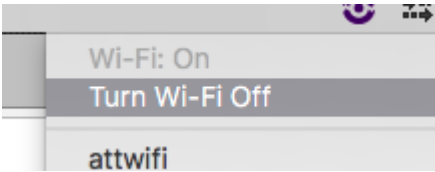
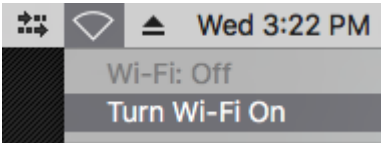


Open audio midi setup

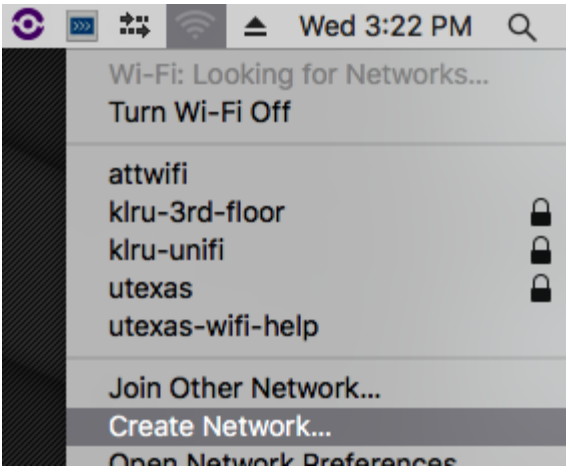


Choose >Focusrite Thunderbolt

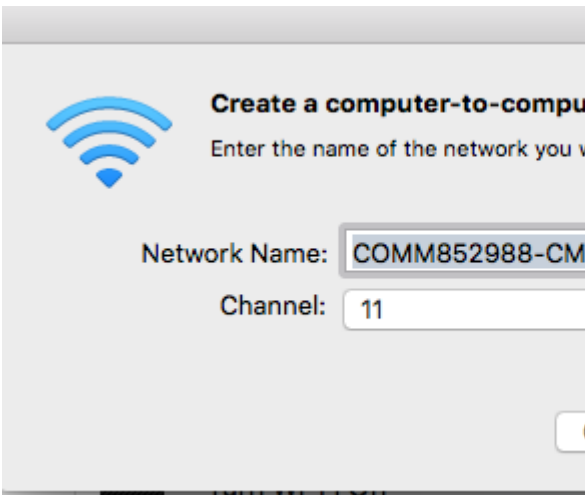


Configure Speakers	
<p>Choose Configuration 5.1 Surround</p> <p>>Focusrite Thunderbolt and 5.1 surround config</p> <p>Each speaker output should send a signal to this cable</p>	
Choose Apply and >Done	
<p>This is how to connect your IPAD skip this part if you don't want to connect an IPAD and the Dock</p> <p>If the Wi-Fi of the computer is already ON, turn the Wi-Fi OFF</p>	
Turn the computer Wi-Fi ON	

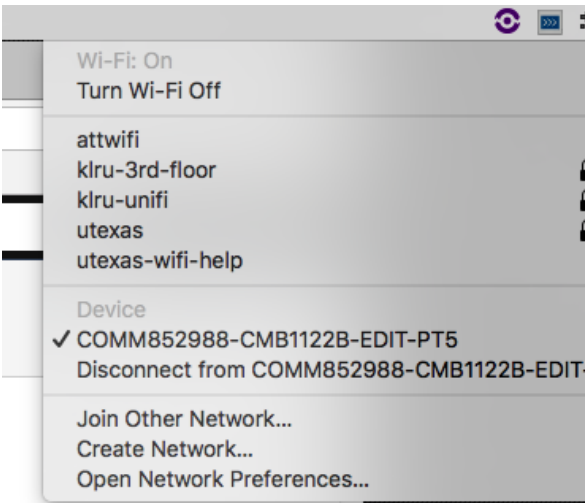
Go to the WiFi Icon and choose > Create Network



The default settings (for the Network Name and Channel ID) are fine.
Click "Create"



Confirm that you are connected to the network that you just created



Put your iPad on the ProTools Dock or use the one that is already there.

TURN IT ON OR -Wake it up by pressing the "Home" key

For more information about using the Dock please refer to the manual:

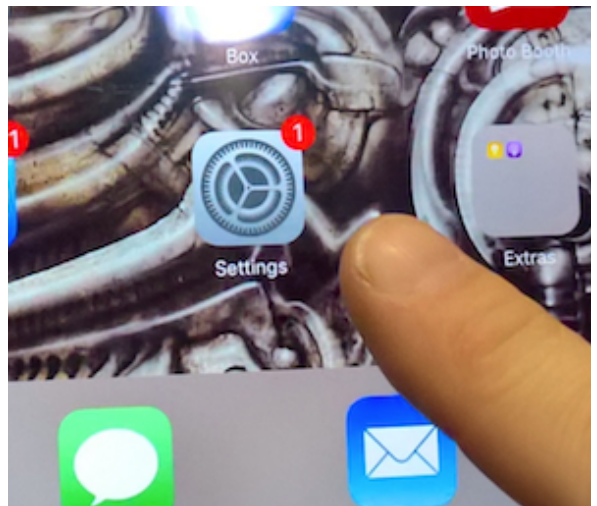
[ProTools Dock \(for Apple iPad\)](#)

You can also view a YouTube video which walks you through the functionality of the Dock and the App:

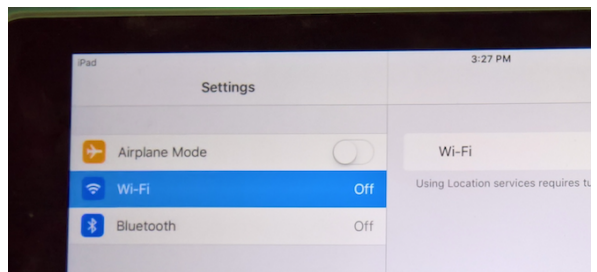
[YouTube Video - ProTools Dock Walkthrough](#)



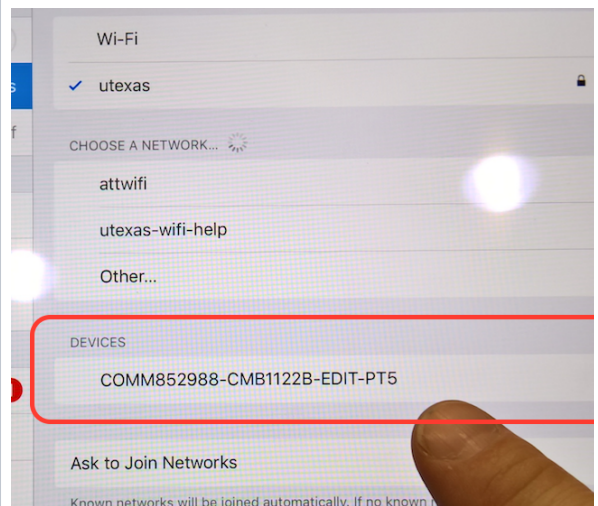
Go to Settings



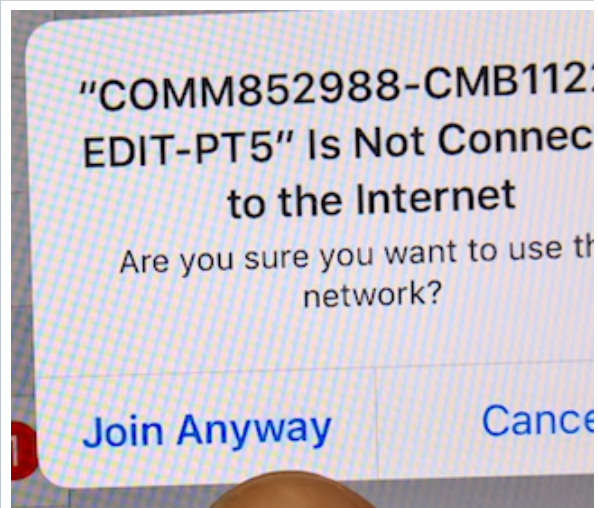
Enable Wi-Fi



Choose the WI-FI network for the Device you just created.



Choose to "Join Anyway"



On the iPad, open the PT Control Application

If you don't have the app installed download it from here
<http://www.avid.com/products/pro-tools-control>

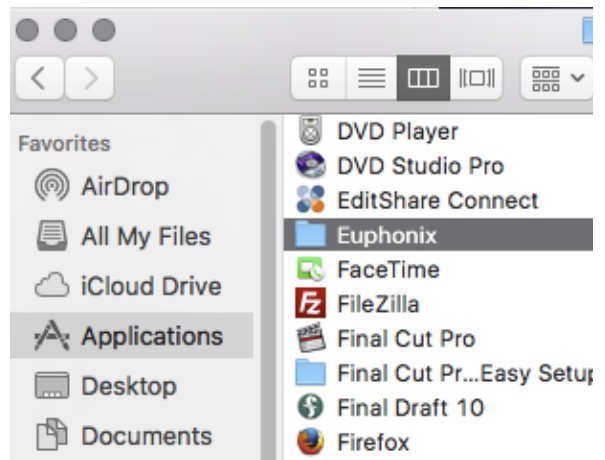


This Step will setup the S3 Console

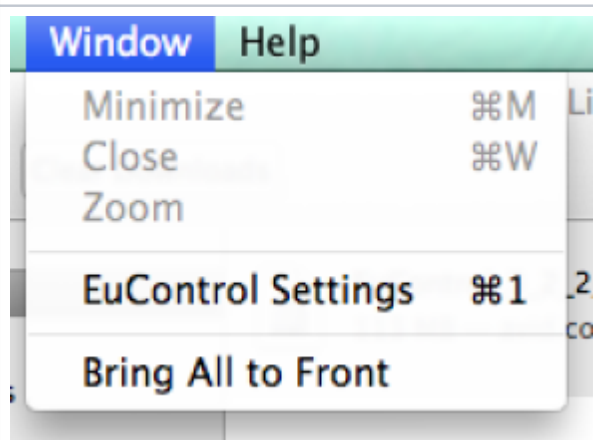
On the computer, launch the EuControl application.

Applications>Euphonix>EuControl

Please be patient while launching - it may take a couple of minutes for the application to launch properly.



Once the application is running, go to > Window > EuControl Settings



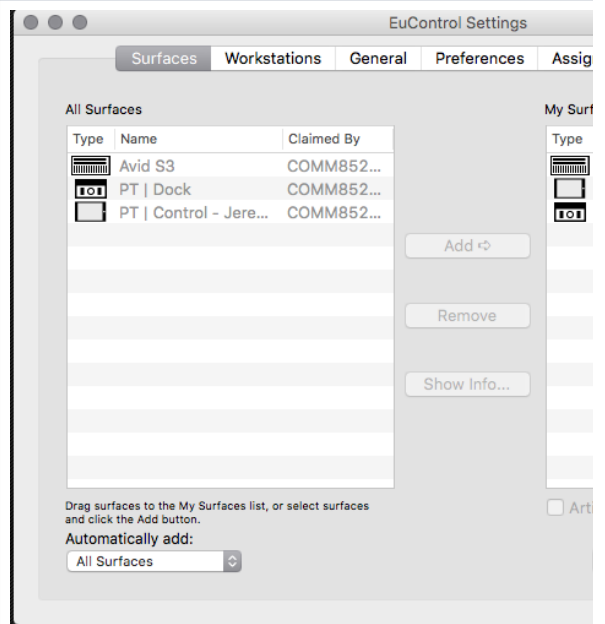
The Surfaces Tab should list 3 devices:

AVID S3

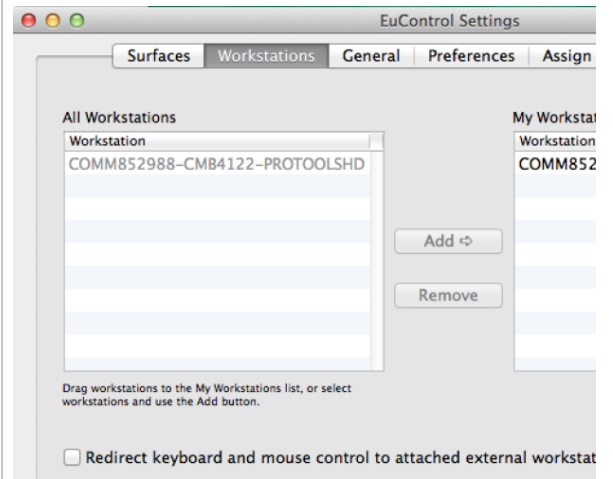
PT Dock

Your iPad PT Control App

It should look similar to the picture on the right.

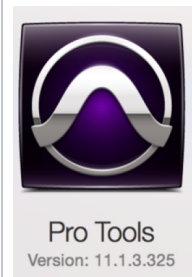


The Workstations Tab should list the computer that is connected



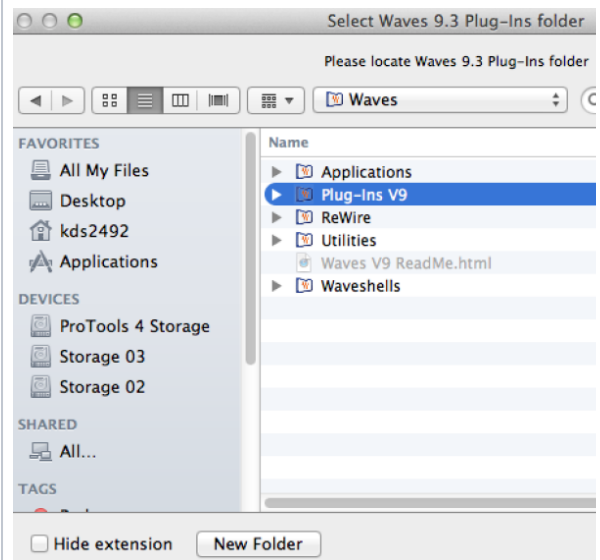
The Next Steps Will Setup ProTools Surround Sound and finish connection to the S3 and iPad Dock

Open ProTools > Create Session or Open existing session



ProTools will ask you where the Waves Plugins are. Go to Applications > Waves > Plugins V9

Click Open



Choose Create Blank Session and or Open an existing session

If creating a blank session,

Choose - Create

Name the session - Local Storage

BWF (.WAV) Audio File Type

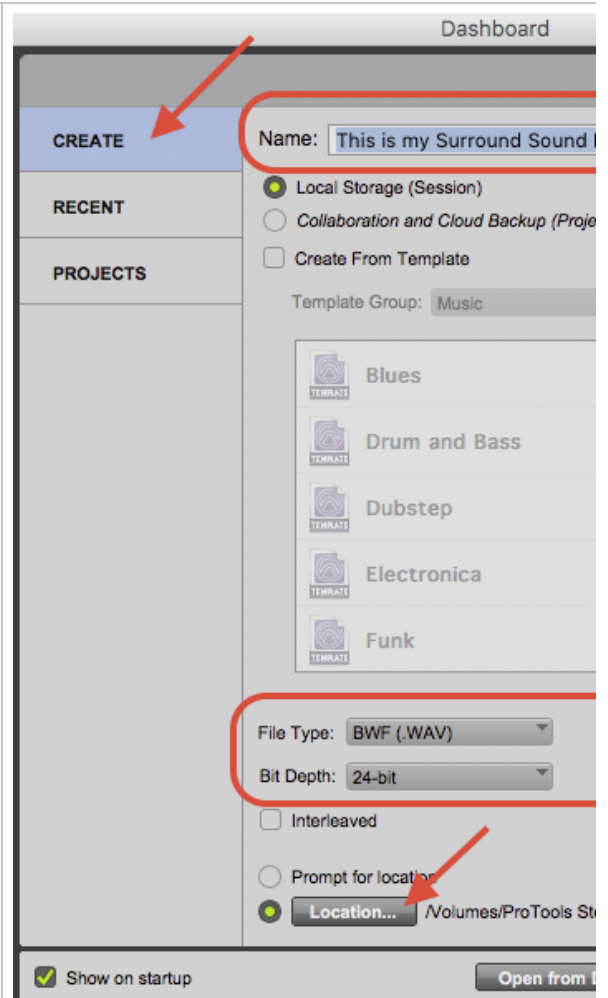
24 Bit Depth

48kHz Sample Rate

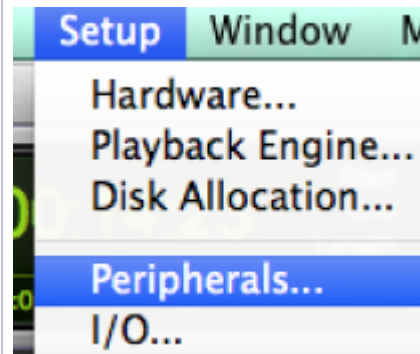
Last Used I/O Settings

LOCATION (press the location button) **CHOOSE** one of the ProTools **HARD DRIVES** **VERY IMPORTANT** - you know where you saved your session !!!

click Create to create your session

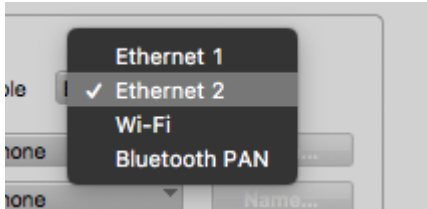


Go to > Setup > Peripherals



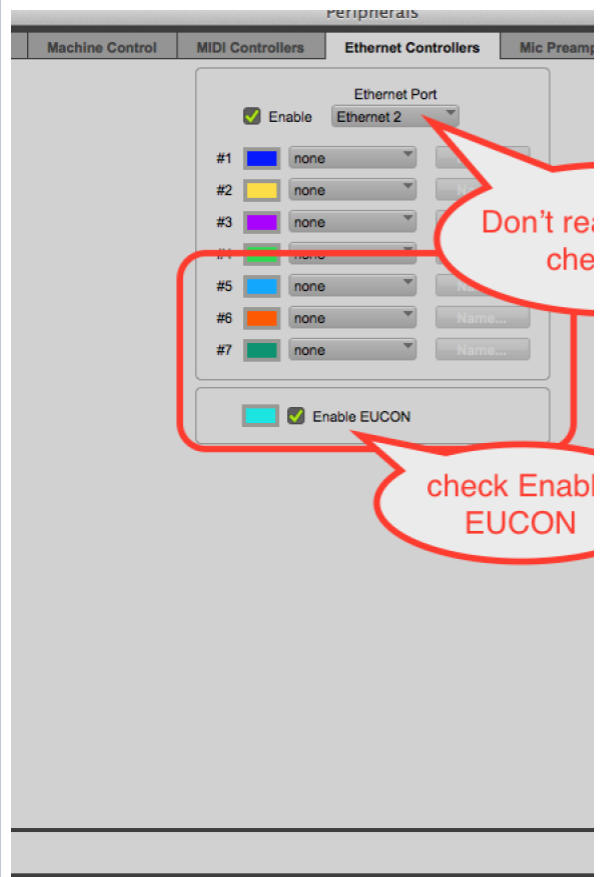
Navigate to the Ethernet Controllers Tab

Enable the Ethernet Port > Ethernet #2



Choose to Enable EUCON

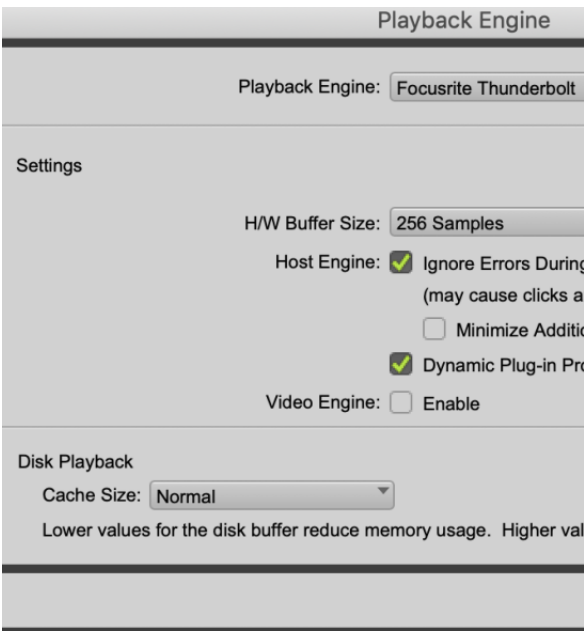
Click OK



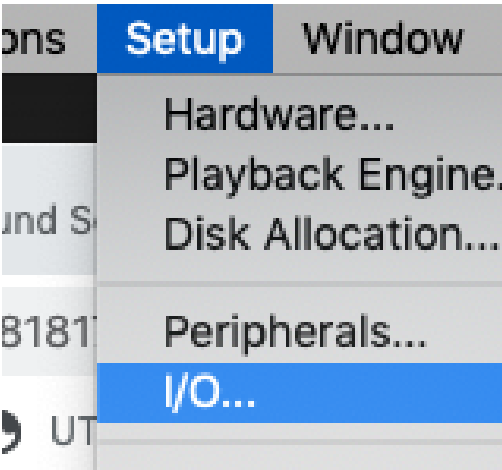
Then go to >Setup>Playback Engine



Set to Focusrite Thunderbolt

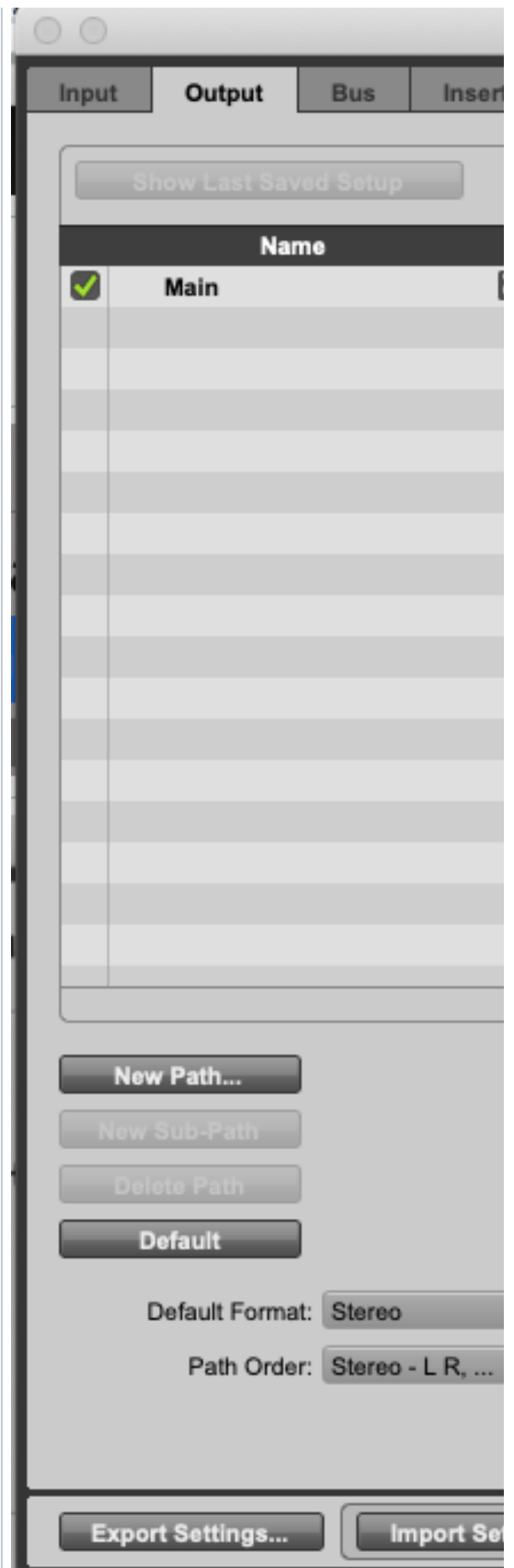


Then Import the surround sound template for the input and the output

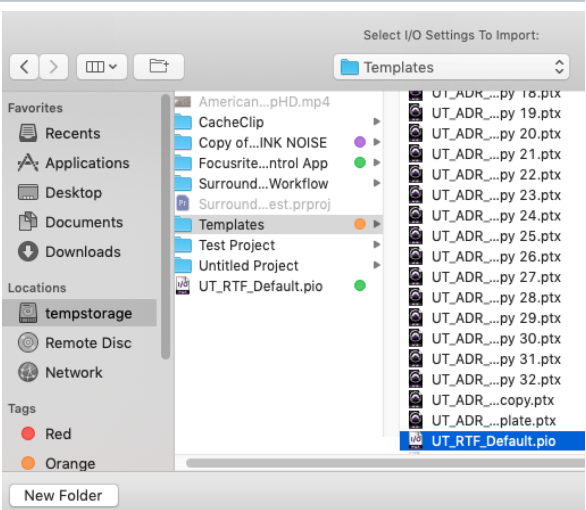


Choose

Import Settings



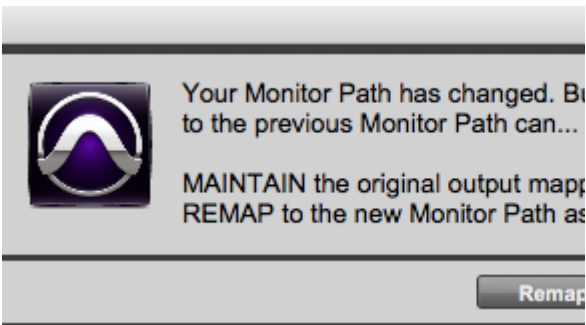
Choose >tempstorage>Templates> UT RTF Default .pio



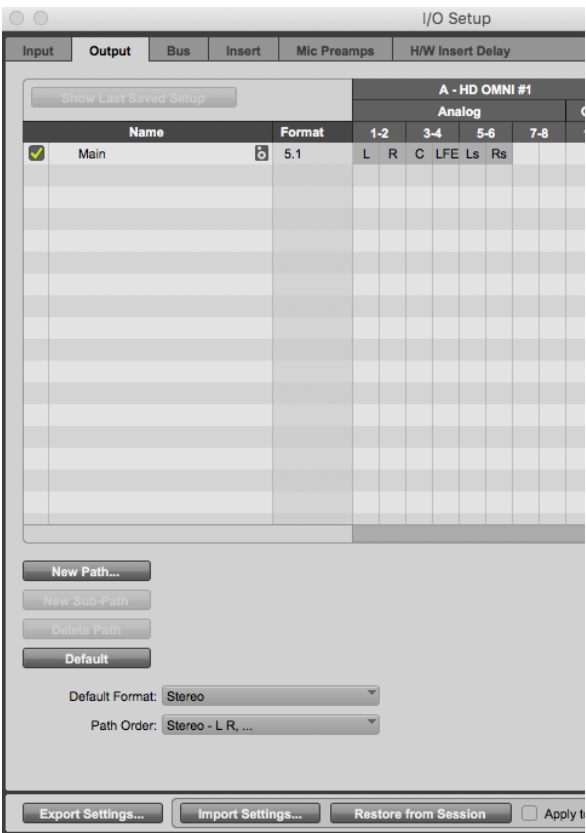
Choose NO here



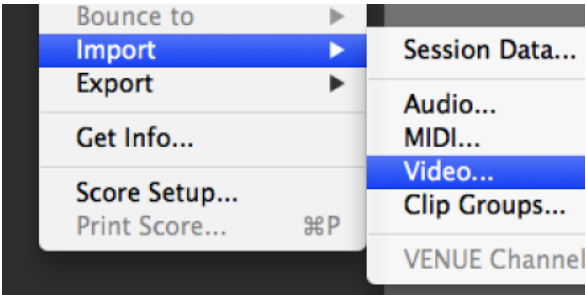
Choose to REMAP to the new Monitor Paths



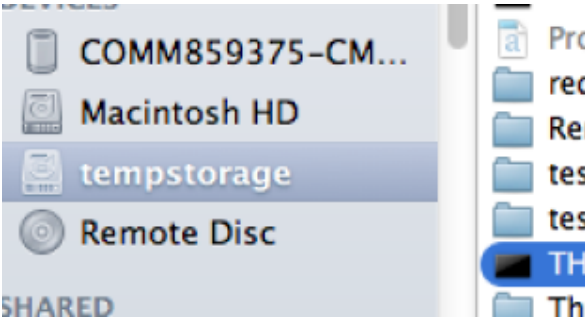
Then Click OK Here



Next Import the video into the project
Choose Import Video



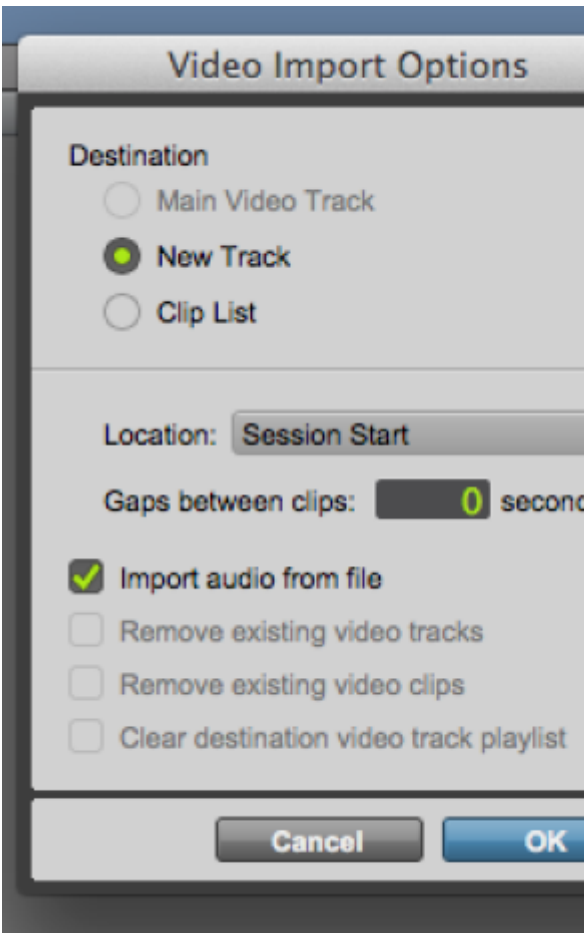
Navigate to the video file that you want to view in the ProTools session



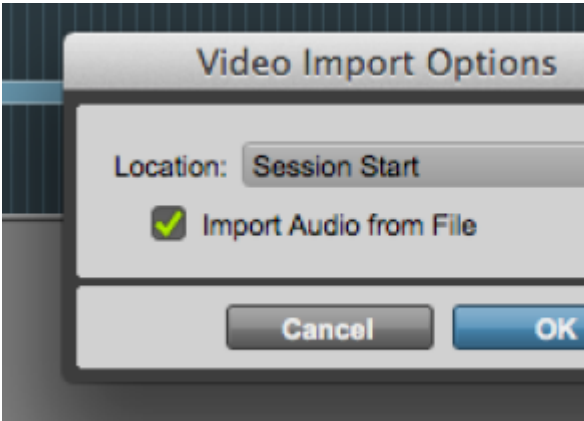
Choose New Track

Import Audio

Click OK

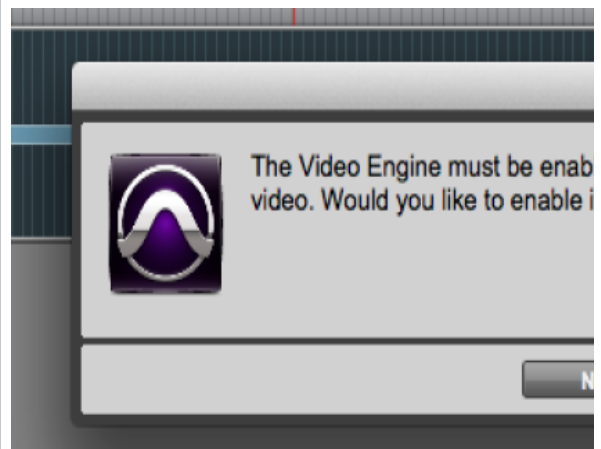


Choose to import at Session Start



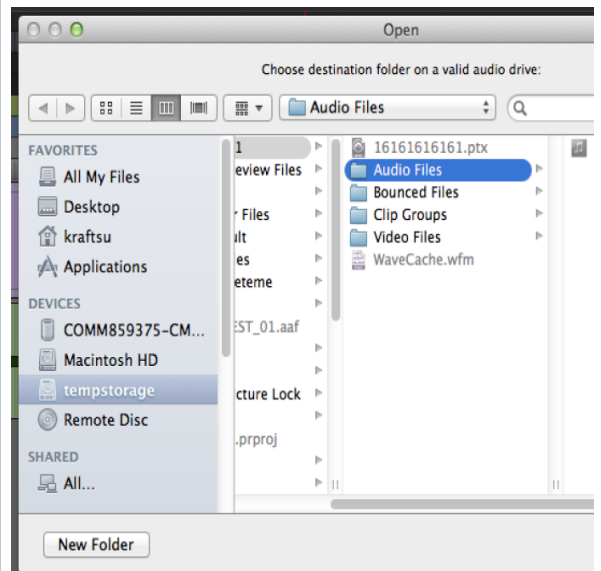
Choose to enable the Video Engine

Click Yes

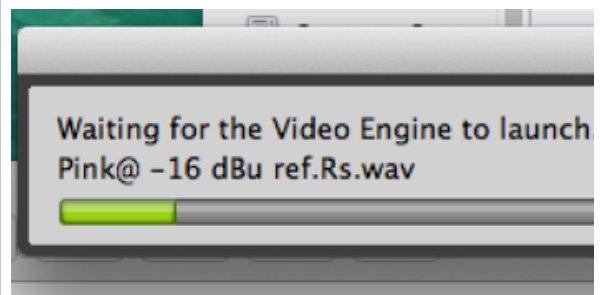


If you would like to use the audio of the video file choose to save it to the default Audio Drive folder

Click OK when prompted

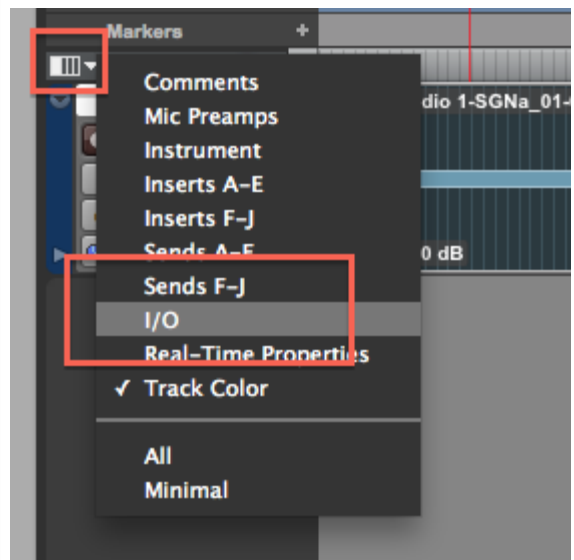


Video Engine will launch and you should be able to see the image on the projector automatically



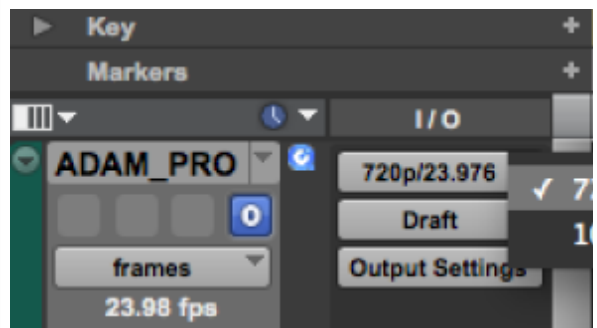
Go to the "Edit Window View Selector" drop down

Choose I/O



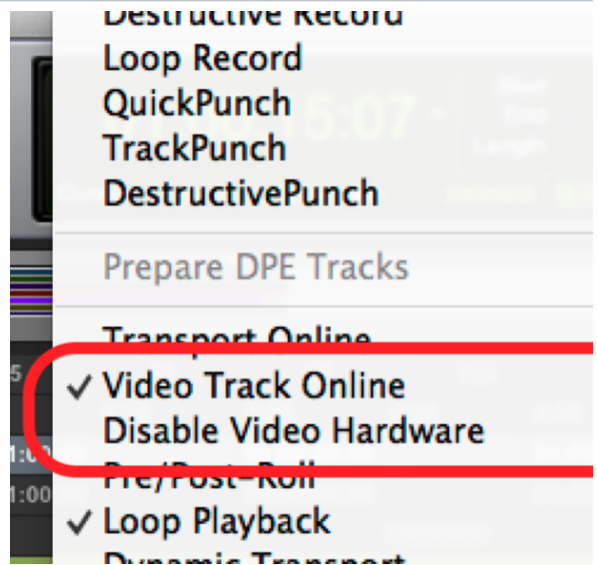
Once the track is imported into the ProTools session change the format of the clip to 720p/23.976 or 1080p/23.976 depending on what kind of file you have

so it plays out to the projector.



Next make sure the Video Track is Online and that the menu states that Video Hardware is Enabled. If Disable Video Hardware is showing it is okay

Go to Options > Video Track Online



Next Go to the Output and set all the tracks to "Main (5.1) > Main"



Turn on the projector

HDMI 1 is the 3rd Computer monitor if you want to see the computer screen on the projector

HDMI 2 is the output of the BlackMagic Video Card

To see the Video out of ProTools choose HDMI 2



Press A button depressed - For Surround Sound output from ProTools

Press B button pressed - For Surround Sound output from everything else AVID, Resolve, Premiere etc.



