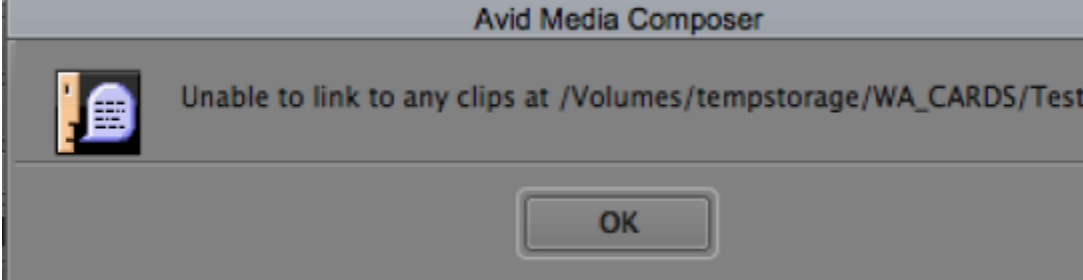



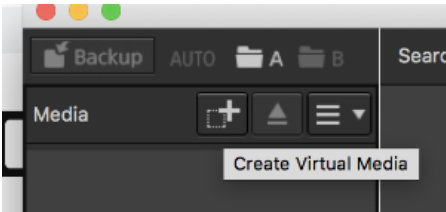
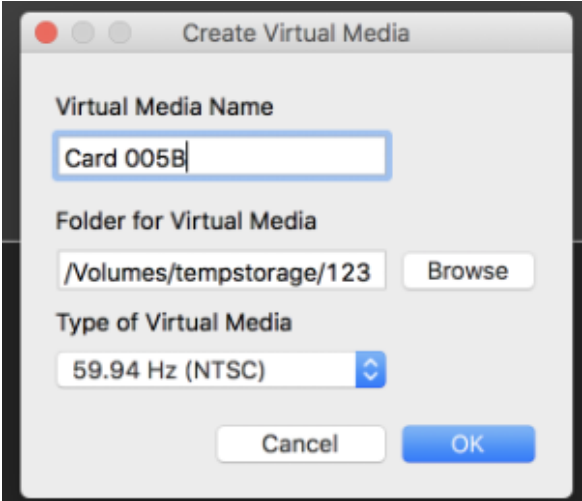
AVID – Canon XF Utility – CF Card Data Repair Workflow

NOTE – DON'T ATTEMPT THIS UNLESS YOU HAVE FULL UNDERSTANDING OF THIS WORKFLOW. ASK A PROCTOR TO HELP OR COME TO CMB 4.113 AND TALK TO RTF TECH STAFF.

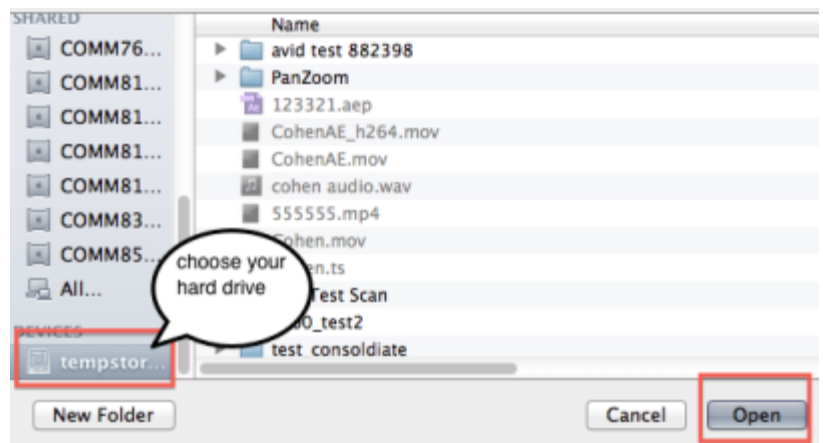
If AVID will not identify the AMA AVID Media Access data from the card shot with the Canon camera. You may get an error like this one.



Use the Canon XF utility to rebuild the data that was copied from the card and then AVID will read the data via the AMA workflow.

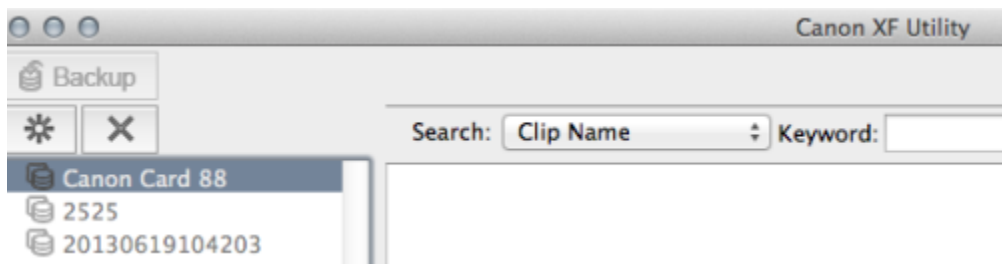
Launch Canon XF Utility	
Click on the "Create Virtual Media" icon	
Title the Virtual Media Name Click on "Browse" and navigate to your hard drive where you want to save your newly made "Card Backup"	

Choose your hard drive destination and click "Open"



When correct data is entered click OK

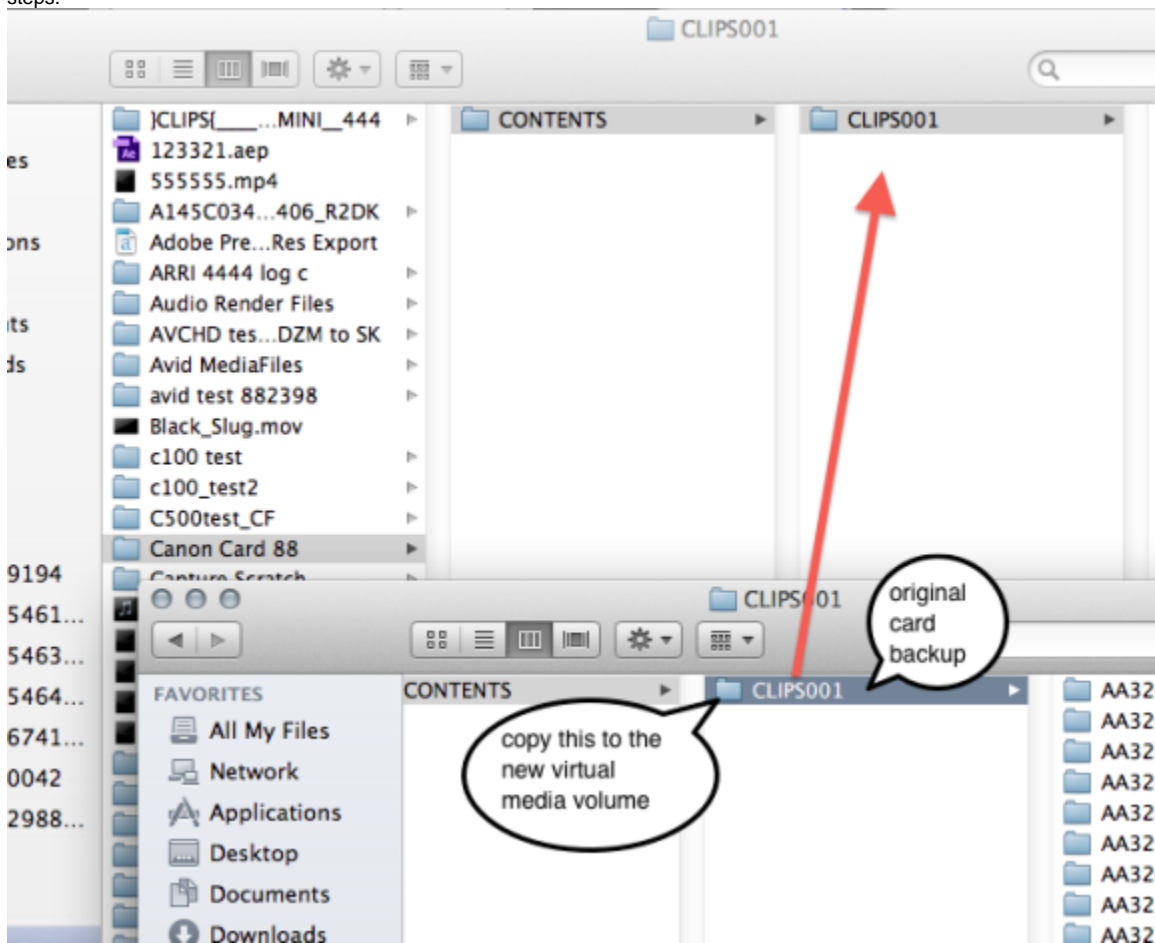




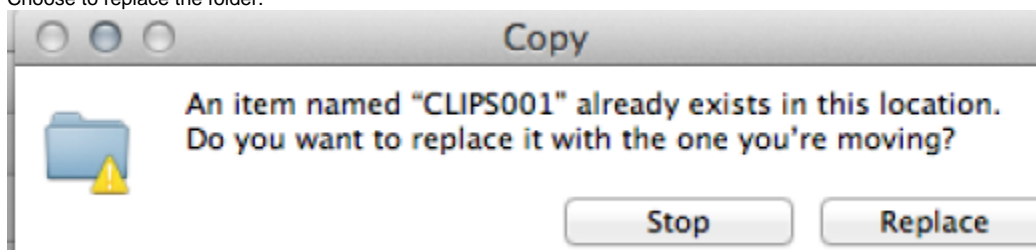
The virtual media volume will be created. The next step will take place on the desktop of the computer.
Quit Canon XF Utility

THIS WILL TAKE PLACE ON THE FINDER LEVEL OF THE MAC

Go to the desktop of the computer and find the original card data.
Copy the "original" CLIPS001 folder and overwrite the "newly created" CLIPS001 in the virtual volume that was made with the Canon XF Utility in prior steps.



Choose to replace the folder.



Now try to link to the files in AVID using the AMA workflow referenced in this wikidoc.