

# Install Konica Minolta Multi-Function Printer on OS X

The following steps will guide you through installing a Konica Minolta multi-function printer

Download the appropriate drivers for the Konica Minolta you are installing

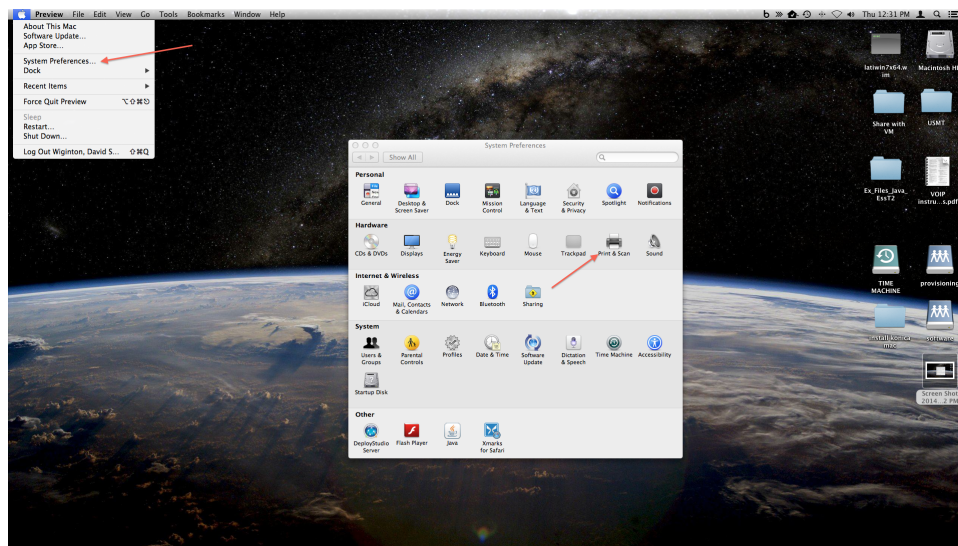
Konica Minolta Bizhub 364e - CMA 5.184  
<http://onyxweb.mykonicaminolta.com/OneStopProductSupport/SearchResults?products=1668>

Konica Minolta Bizhub C654e - CMA 7.112A, DMC 4.340C, CMA 6.118  
<http://onyxweb.mykonicaminolta.com/OneStopProductSupport/SearchResults?products=1630>

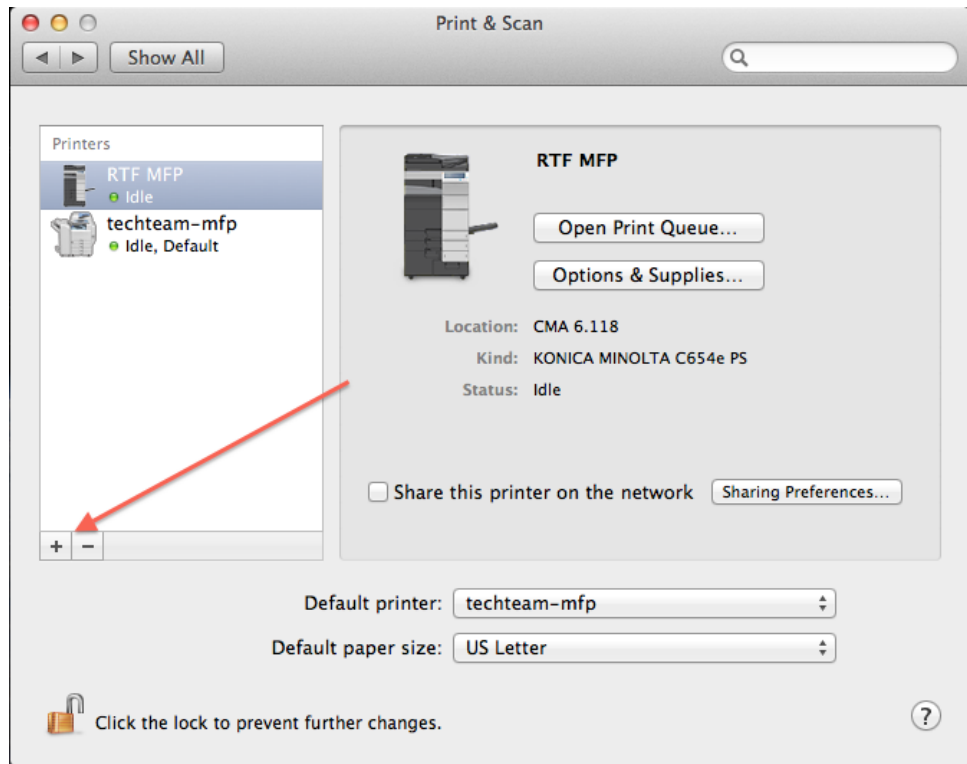
Konica Minolta Bizhub C754e - DMC 5.312H  
<http://onyxweb.mykonicaminolta.com/OneStopProductSupport/SearchResults?products=1632>

Click on the Apple menu and select System Preferences

Click the Print & Fax icon



Click on the + and select add printer

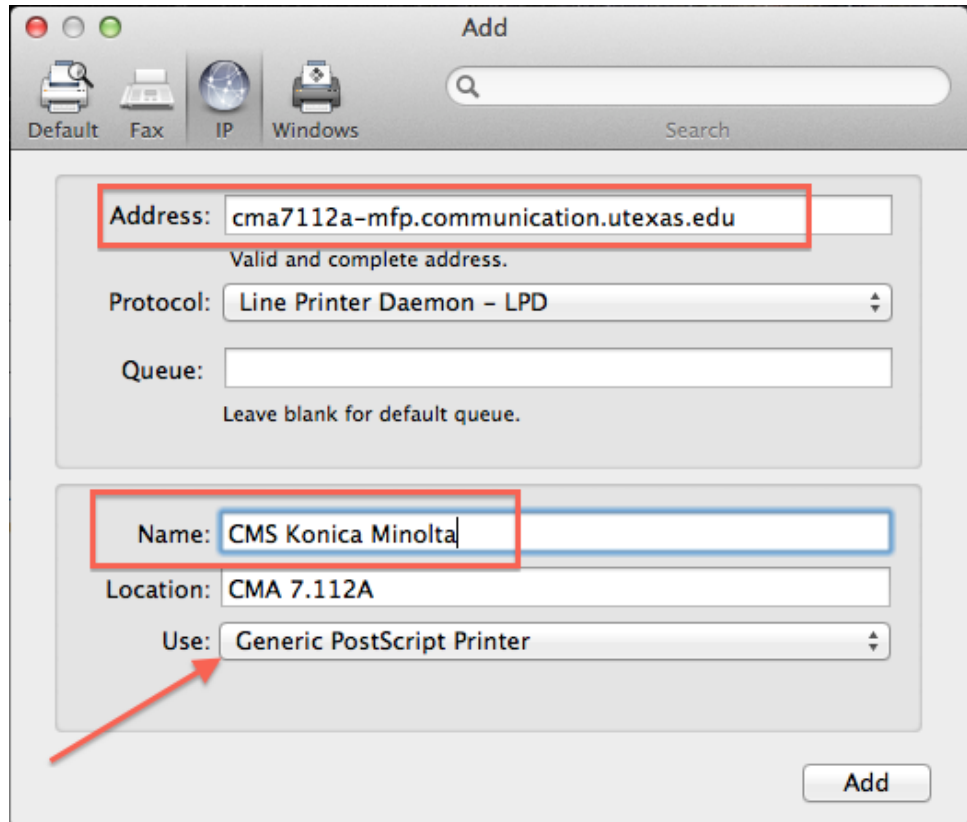


Click on the IP tab at the top

In the address field put in the URL of the printer. Those are available on the [Multifunctioning Devices and Printers](#) page.

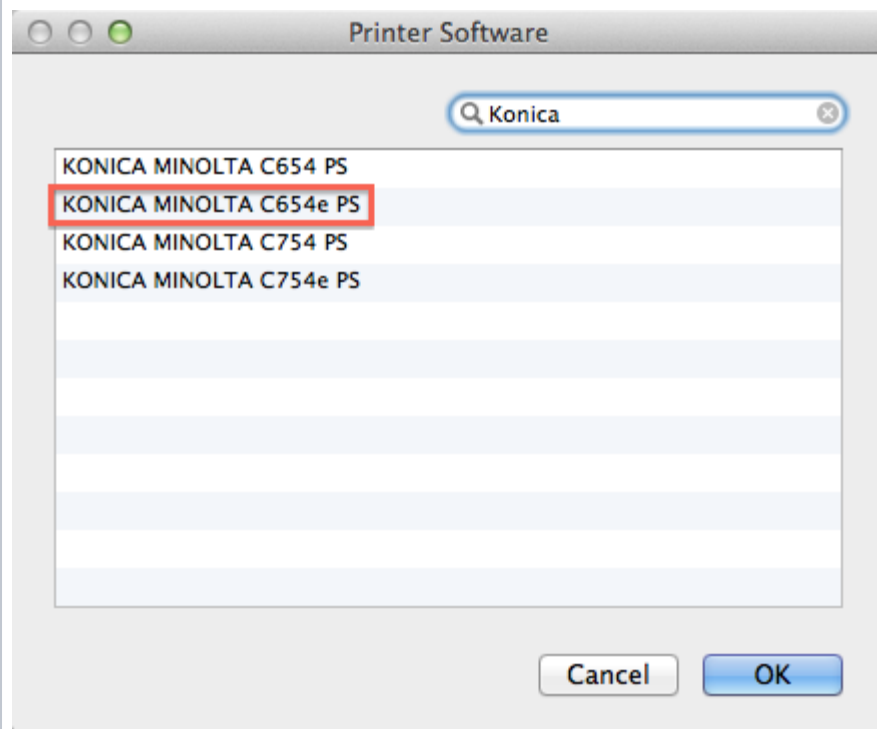
Give the printer a name that makes it easy to identify. I suggest the department name then Konica Minolta

Click the Use drop down and choose "Select Printer Software"

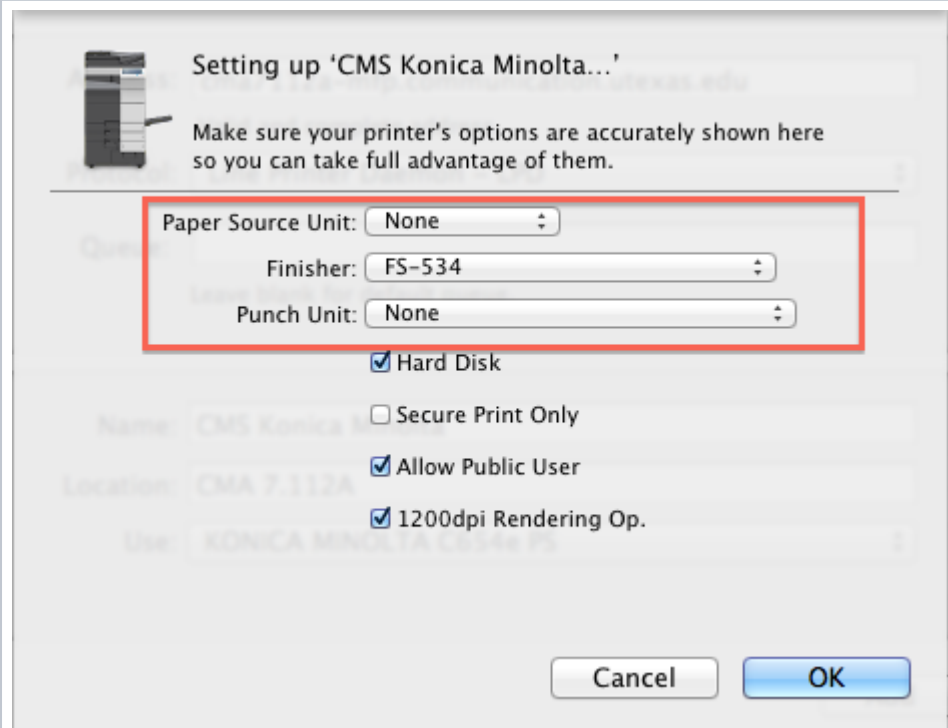


In the search field type in "Konica"

Select the proper driver for the device that you are installing. In this case it is for the C654e.



Select the appropriate configuration options for the printer you are installing. That information is available on the [Multifunctioning Devices and Printers](#) page.

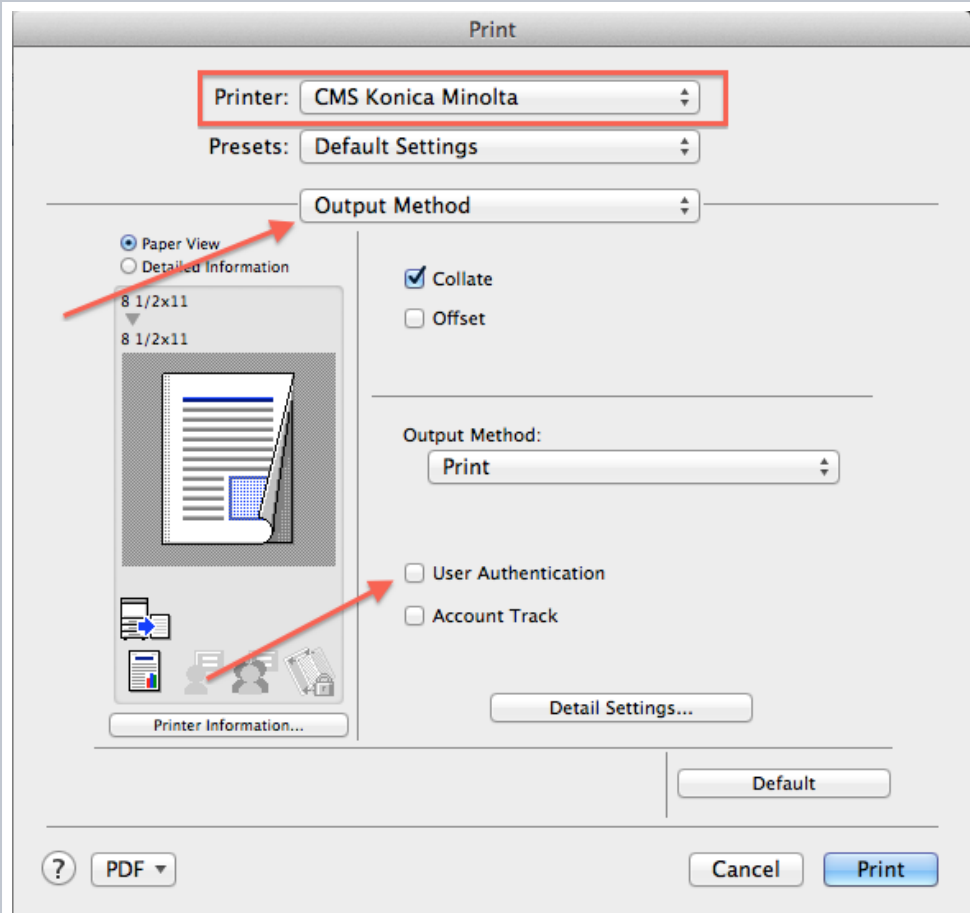


Open a Word document and bring up the print menu.

Chose the Konica Minolta printer that you installed above.

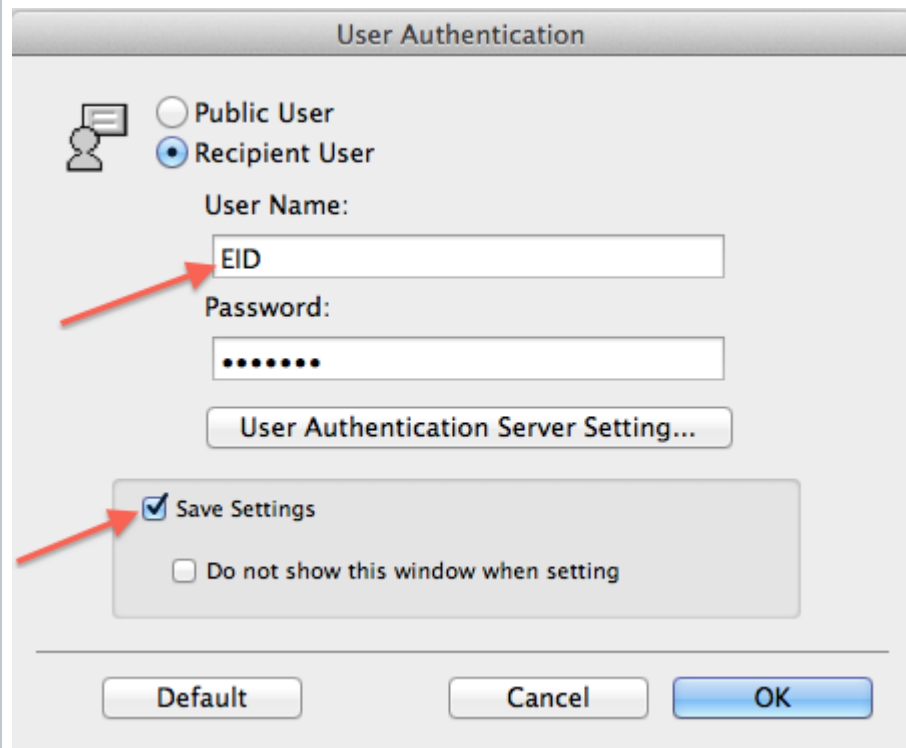
Select "Output Method" in the dropdown menu.

Check the box next to "User Authentication"

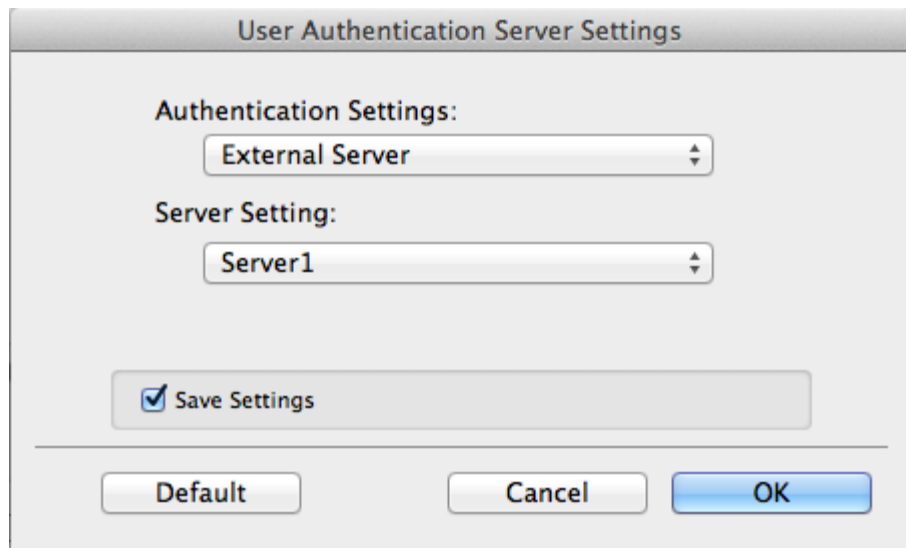


Put in the constituent's EID and password.

Check the box for "Save Settings"

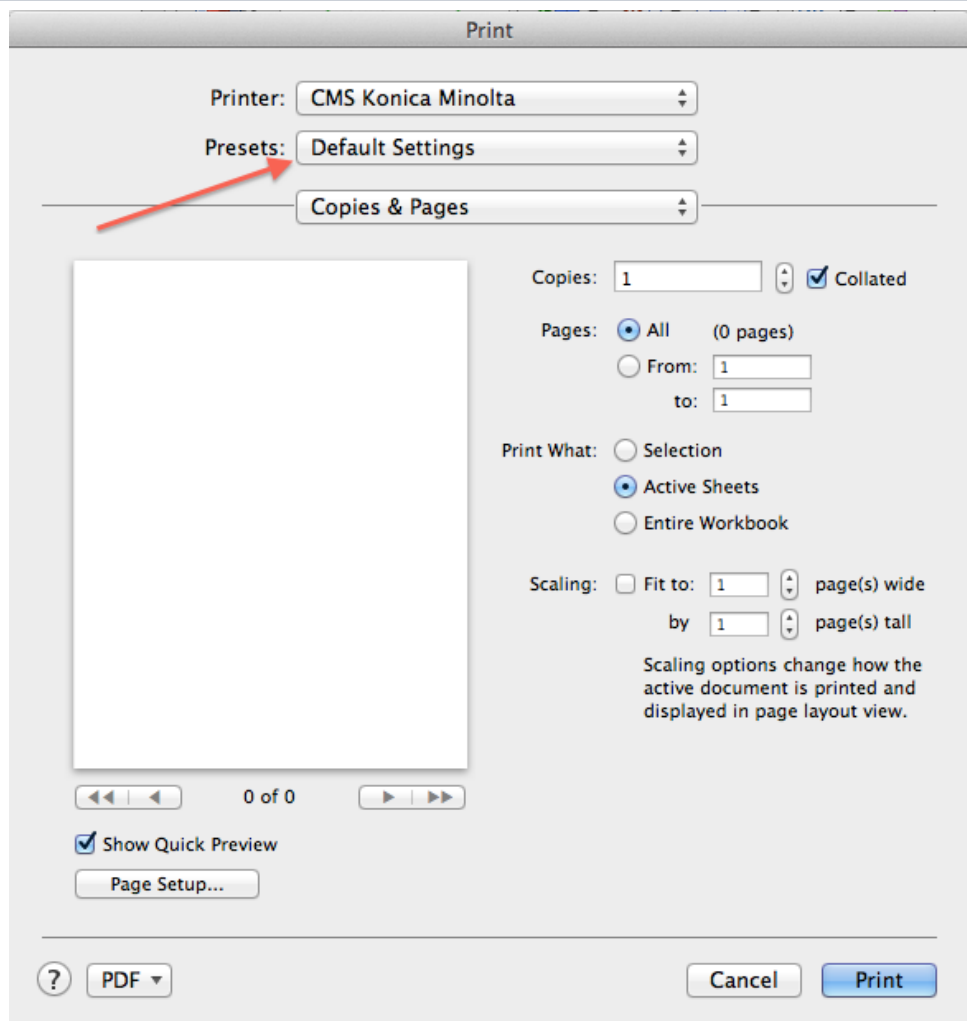


The Authentication Settings should look like the image to the left.



The dialog box is titled "User Authentication Server Settings". It contains two dropdown menus: "Authentication Settings:" with "External Server" selected, and "Server Setting:" with "Server1" selected. Below these is a checkbox labeled "Save Settings" which is checked. At the bottom are three buttons: "Default", "Cancel", and "OK".

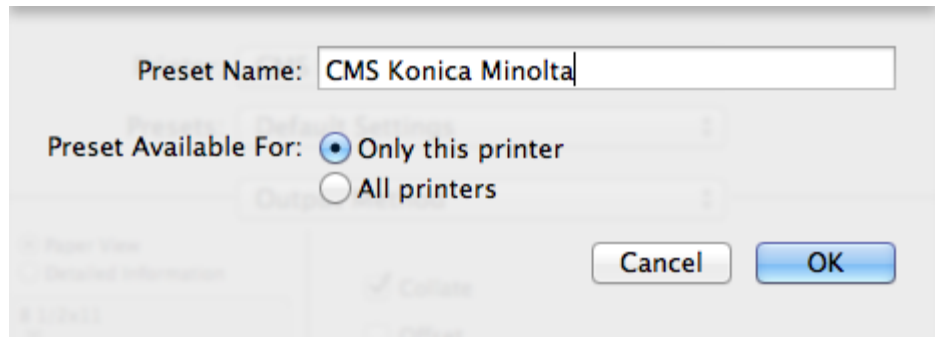
In the Presets drop down menu select "Save Current Settings as a Preset"



The dialog box is titled "Print". It features a "Printer:" dropdown menu set to "CMS Konica Minolta" and a "Presets:" dropdown menu set to "Default Settings". A red arrow points to the "Presets:" dropdown. Below these is a "Copies & Pages" dropdown menu. To the left of the settings is a large white rectangular area for a preview. To the right, there are settings for "Copies:" (set to 1) with a checked "Collated" checkbox, "Pages:" (set to "All" with "(0 pages)" next to it), and "Print What:" (set to "Active Sheets" with "Selection" and "Entire Workbook" as other options). Below these are "Scaling:" options: "Fit to:" (set to 1) "page(s) wide" and "by" (set to 1) "page(s) tall". A note states: "Scaling options change how the active document is printed and displayed in page layout view." At the bottom left are navigation arrows, "0 of 0", a checked "Show Quick Preview" checkbox, and a "Page Setup..." button. At the bottom right are buttons for "?", "PDF", "Cancel", and "Print".

Give the preset an easy to remember name then click OK.

Now the constituent is ready to print to the Konica Minolta Multi-Function printer.



The image shows a screenshot of a printer configuration window. At the top, there is a label "Preset Name:" followed by a text input field containing the text "CMS Konica Minolta". Below this, there is a label "Preset Available For:" followed by two radio button options: "Only this printer" (which is selected) and "All printers". At the bottom right of the dialog, there are two buttons: "Cancel" and "OK". The background of the dialog is light gray with some faint, blurred text and icons visible.